



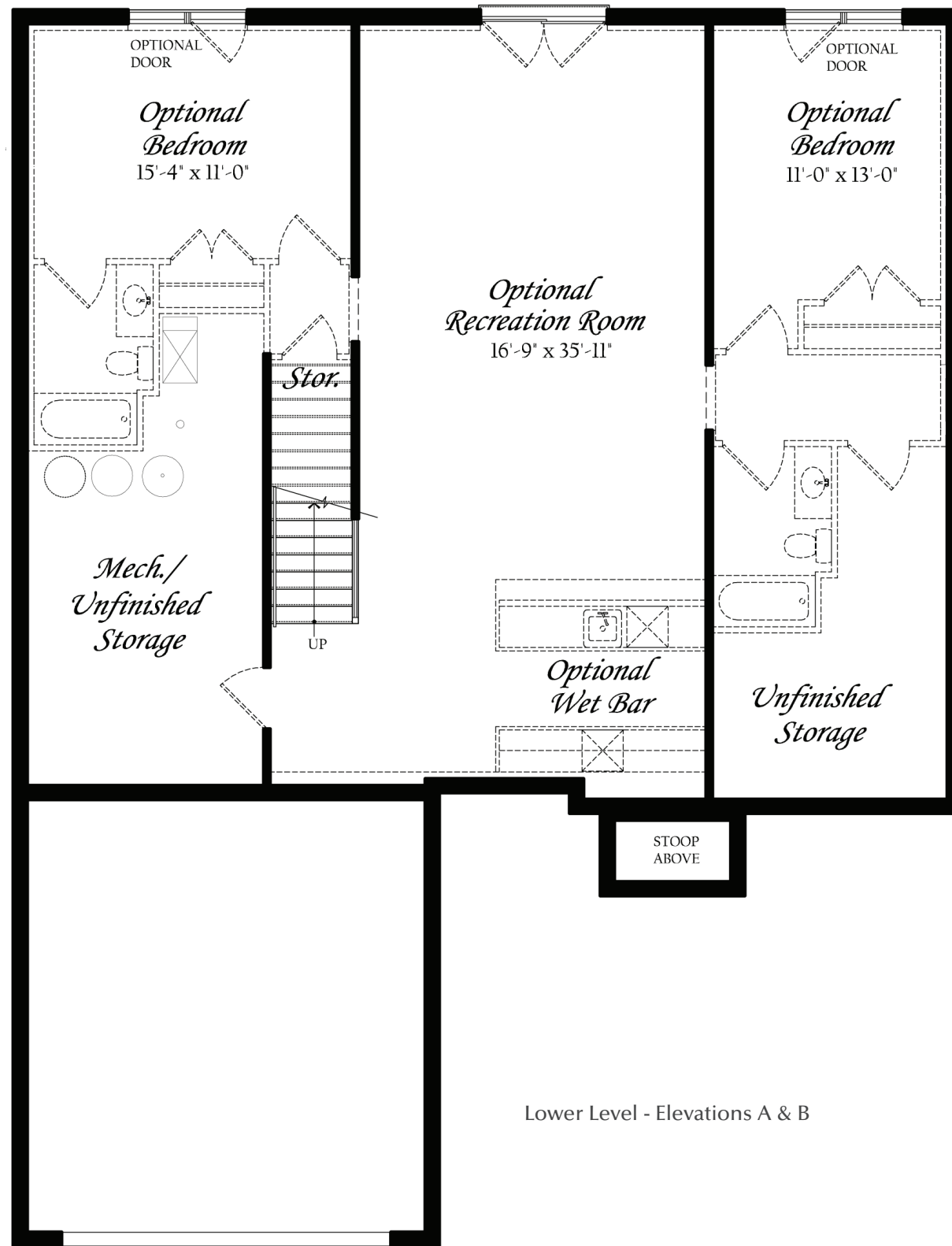
# Lower Level with Walkout Condition

THE HALYARD AT SUNSET COVE.



# The Halyard at Sunset Cove.

LAKE ANNA, VIRGINIA 23117.



Lower Level - Elevations A & B



Elevations A & B | Starting Square Footage: 1,710 | Starting with 3 Bedrooms, 2 Full Baths



Elevation C



Elevation D



The builder reserves its right to change, upgrade or alter its plans, specifications and materials without notice or obligation. Illustrations are conceptual and all dimensions are approximate. See sales representative for details. Options as indicated are available at additional cost and may not be available in all locations. This brochure is for illustrative purposes only and is not part of a legal contract. Photography may not represent exact home type available.

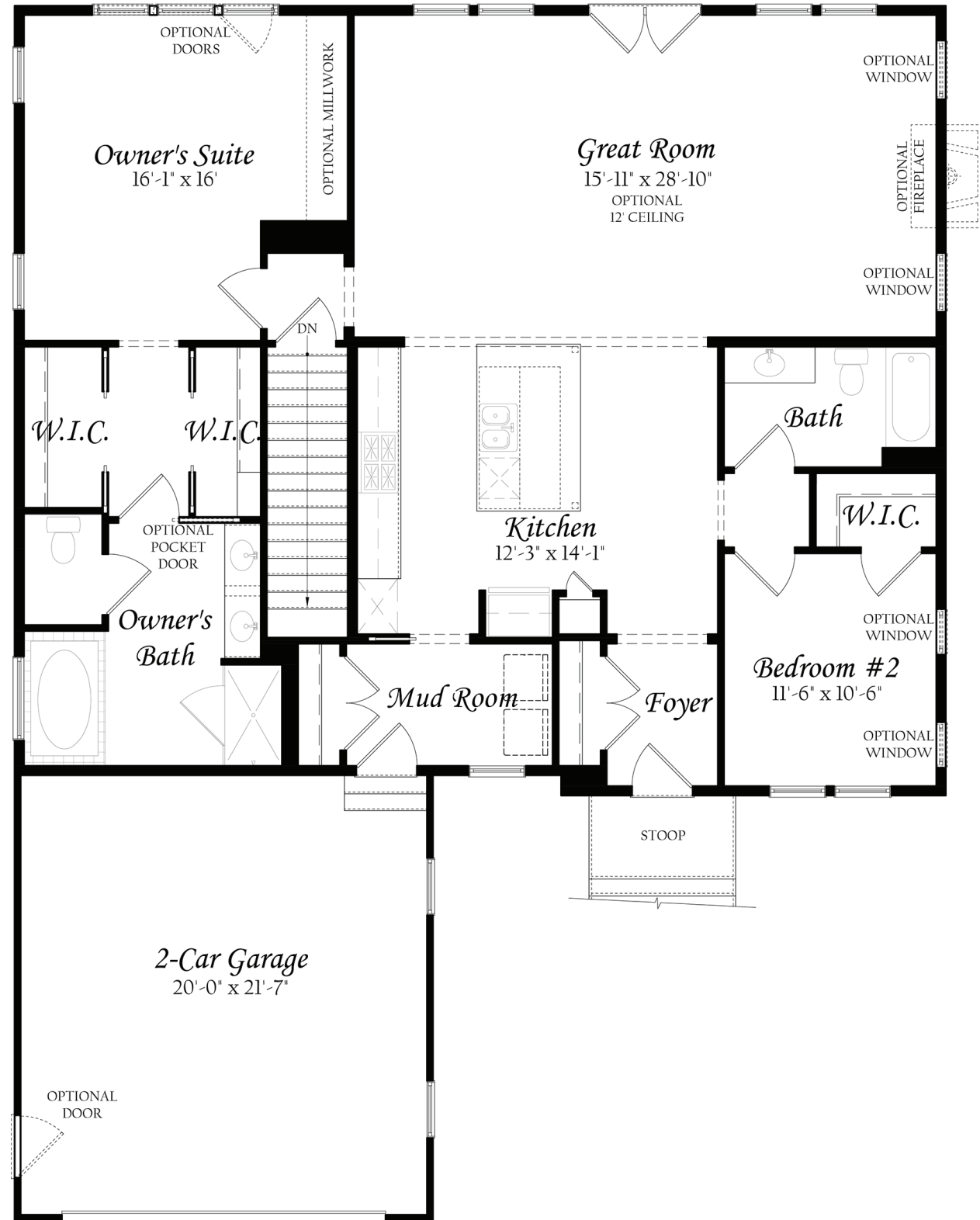
04-05-2016  
JCD  
Version 2.6

Ron Gentry  
540.266.3208 | [RGentry@EvergreeneHomes.com](mailto:RGentry@EvergreeneHomes.com)



# Main Level

THE HALYARD AT SUNSET COVE.

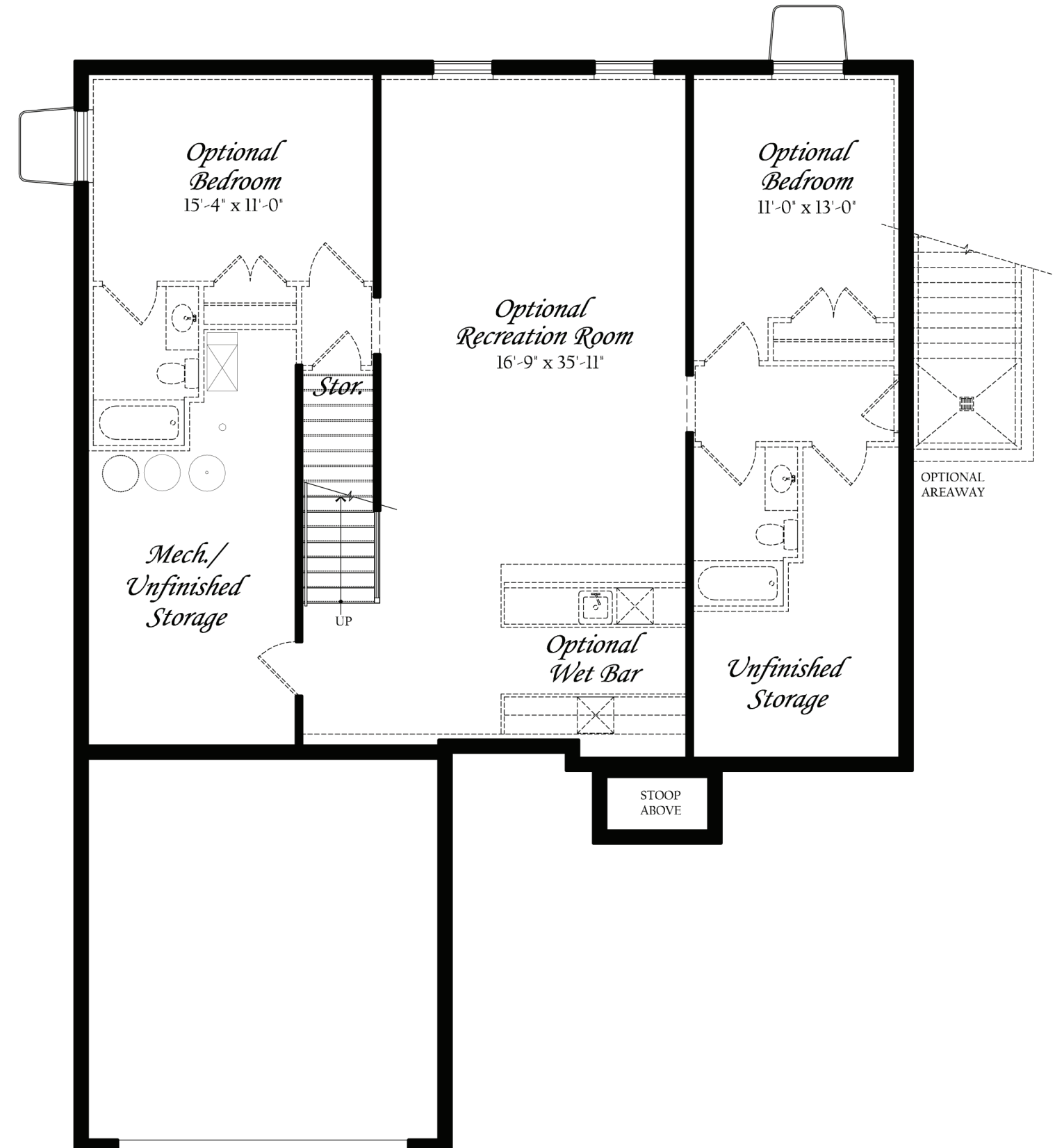


Main Level - Elevations A & B



# Lower Level with Buried Condition

THE HALYARD AT SUNSET COVE.



Lower Level - Elevations A & B