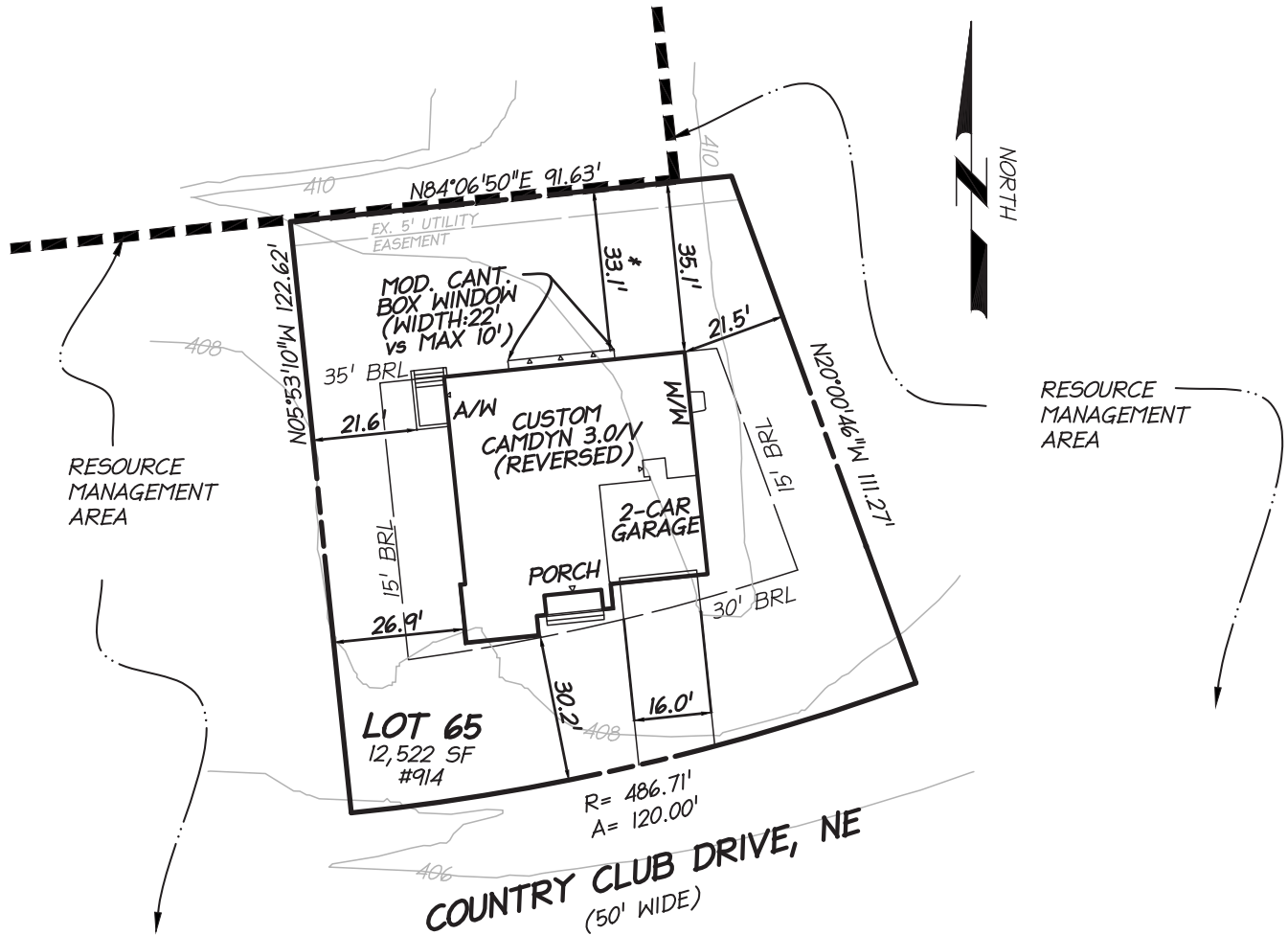


COMMUNITY PLAN



MYEVERGREENEHOMES.COM | 703.667.7878 | SALES@EVERGREENEHOMES.COM

## EVERGREENE ENERGY EFFICIENCY

It is quite easy for a Builder to claim that they build an energy efficient home, but much more difficult for most Builders to substantiate that claim with hard data. What separates Evergreene Homes from our competition is that we can clearly demonstrate, with 3rd party verification, that each and every one of our homes is truly an energy efficient home. We do this by testing and ranking energy efficiency with a nationally accepted protocol so that each home can be fairly compared against others. This is what we call The Evergreene Difference.

To understand how our homes are evaluated, it is first necessary to understand the HERS (Home Energy Rating System) Index. The HERS Index is a scoring system created by the Residential Energy Services Network in 2006. In this system, a home built to the specifications of the HERS Reference Home (based on the 2004 International Energy Conservation Code) scores a HERS Index of 100, while a net zero energy home scores a HERS Index of 0. The lower the home's HERS Index, the more energy efficient it is.

Each 1-point decrease in the HERS Index corresponds to a 1% reduction in energy consumption compared to the HERS Reference Home. Thus, a home with a HERS Index of 85 is 15% more energy efficient than the HERS Reference Home and a home with a HERS Index of 80 is 20% more efficient.

To calculate the HERS Index for a home, the home must be reviewed, inspected and tested by an independent party known as a Rater. The Rater will conduct a number of onsite inspections, including a blower door test and a duct test. Results of these tests, along with inputs derived from an architectural plan review, are used to generate the HERS Index for the home.

Due to its reliability, the HERS Index scoring system has been widely adopted by both the private and public sectors. The Energy Star program designed by the U.S. EPA uses the HERS Index as one of its critical measurements. In Version 2.0 of Energy Star, a home is required to achieve a HERS Index of 85 or lower. By comparison, since January of 2015, the average Evergreene Single Family Home achieved a HERS Index of 55. These Evergreene Homes were 45% more efficient than the HERS Reference Home and 30% more efficient than the baseline Energy Star qualified home. To put this into perspective, for every dollar spent on heating and cooling the HERS Reference Home, the baseline Energy Star homeowner spent \$0.85 and the Evergreene homeowner spent only \$0.55.

A HERS Index Score Card is standard with every new Evergreene home and given to the homeowner after the home has been completed. Our homeowners are encouraged to proudly display these cards to show their friends and family that they have chosen to go "e-Greene." Energy Efficiency has been instrumental in helping us achieve our company goal of creating a more sustainable future – all while saving our homeowners substantial energy costs.

