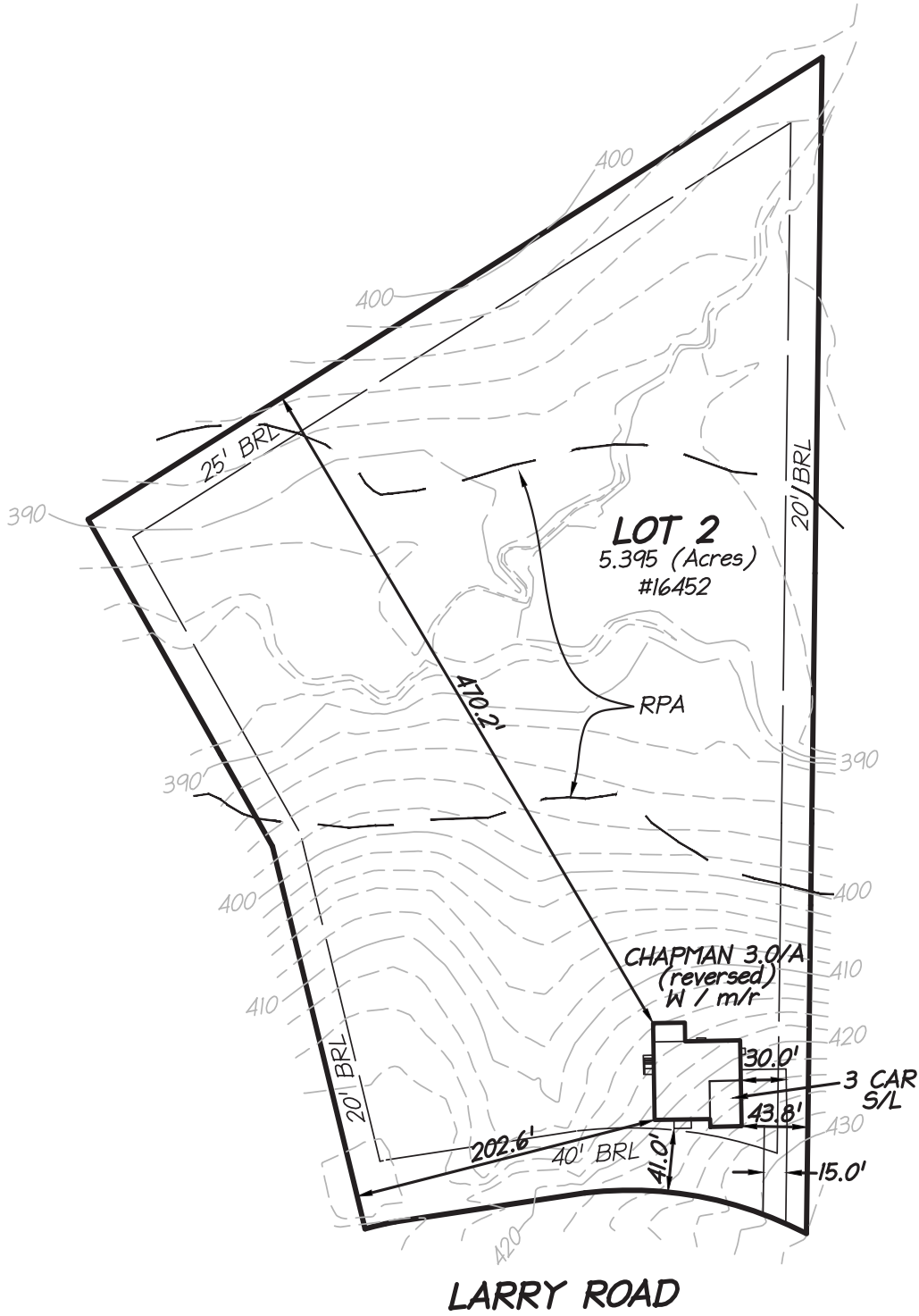


COMMUNITY PLAN



MYEVERGREENEHOMES.COM | 703.667.7878 | SALES@EVERGREENEHOMES.COM



Evergreene Homes Standard Features

THE PLATINUM FINISH PACKAGE

ATTENTION TO DETAIL

Distinctive Exteriors

- 2 x 6 Framed Exterior Walls with Poured Concrete
- M/I Brand Vinyl Windows Low E Glass with Contoured Grids
- CertainTeed Landmark 30 Year Architectural Shingles
- James Hardie 8.5" Color Plus Siding
- Masonite Fiberglass Entry Door w/ Schlage Handle & Lock
- Stone or Brick Front Water Table (Per Plan)
- Garage Door Opener w/ 2 Remote Controls
- Finished Garage: Painted w/ Trim
- Designer Kichler or Maxim Brand Lighting Fixture Package
- Hose Bibs & GFI Outlets - Front & Rear
- Beautifully Appointed Exterior Features
- Flagstone or Brick Front Porch/Stoop & Stairs (Per Plan)

Elegant Interior Features

- Interior Floorplans Designed to Maximize Natural Light
- Ceiling Heights: Basement - 9', 1st Floor - 9', 2nd Floor - 9'
- Upgraded Deluxe Kitchen Layout
- Deluxe 42" (Upper) Cabinets & Hardware
- Moen Designer Kitchen Faucet
- Soft Close Doors and Drawers (Dovetail) Throughout
- Granite / Quartz Kitchen Countertops
- Ceramic Tile Backsplash in Kitchen
- Upgraded Wood Shelving in Closets and Kitchen Pantry
- Samsung S/S Appliances with Oven/Microwave Combo
- Classic Oak Stairs and Handrails From Main to Upper Level
- Shaw Hardwood Floors - Entire 1st Floor & 2nd Floor Hall
- Decorative Colonial Trim Package
- Coffered Ceiling: Family Room
- Boxed Ceiling: Owners Bedroom (if 2nd Floor)
- Heatilator/Heat N Glo Fireplace w/ Slate Surround
- Home Wiring with 3 Internet, Cable, and Phone
- Sherwin Williams Brand: 3-Toned Interior Paint
- Abundant Recess Lighting (Per Plan)

Appointed Owner's Bath

- Granite / Quartz Vanity Countertops - Owner's Bath
- Frameless Shower Enclosures (Per Plan)
- Separate Shower. Kohler Soaking Tub (Only Per Plan)
- Ceramic Floor & Wall Tiles (various sizes)
- Moen Quality Fixtures & Bath Hardware
- Sterling Elongated Toilets

Attention to Secondary Baths & Closets

- Pedestal Sink w/ Decorative Mirror in Powder Room
- Granite / Quartz Vanity Countertops - Secondary Baths
- Ceramic Floor & Wall Tiles (various sizes)
- Sterling Vikrell 5' Tub/Shower
- Moen Quality Fixtures & Bath Hardware
- Sterling Elongated Toilets

Energy Efficient Features

- H.E.R.S. Rated Home (Including a Blower Door Test)
- Energy Star Appliances
- LED Energy Efficient Bulbs (excluding fan/light combos)
- Major Name Brand Furnace, 92% Energy Efficient, 15 SEER A/C
- Honeywell Programmable Thermostat (1 Per Zone / Per Plan)
- Aprilaire Humidifier (Lower Zone)
- R-49 Attic Insulation, R-21 Exterior Wall Insulation
- Amarr Insulated Garage Door (Per Plan)
- Housewrap, Taping & Poly Seal Program
- Quick Recovery "Power Vent" Water Heater (If Gas Std in Home)
- 2 x 6 Framed Exterior Walls
- Passive Radon System
- High Efficiency Electronic Air Cleaner

Warranty

- 1 Year Material & Workmanship / 2 Year Mech Warranty
- 10 Year Structural & Transferable Warranty

Availability, selections and pricing are subject to change at any time without prior notice.
Photos on our website and social media may depict details that include additional enhancements.

MYEVERGREENHOME.COM | 703.667.7878 | SALES@EVERGREENEHOMES.COM

Above information is believed to be accurate but should not be relied on without verification.
See Sales Representative for complete details. Brokers Warmly Welcomed.

Updated: 6/16/23

As an Evergreene Homes Purchaser, you have the right to select a lender and settlement agency of your choice to obtain financing and conduct the closing on your future home. Your lender will play an important role in the coordination of numerous administrative and clerical functions related to underwriting the transaction and managing the collection of documents and the disbursement of funds required to carry out the terms of the Agreement of Sale. To help facilitate a successful closing, Evergreene Homes would like to present our Preferred Lenders and Affiliated Settlement Agency:

PREFERRED LENDERS - VIRGINIA



Fernando A. Marquez
Vice President, Sales Manager
11325 Random Hills Road, Suite 400,
Fairfax, VA 22030
Mobile: 703.627.3733
fmarquez@mcleanmortgage.com



Rick Munch
Truist Mortgage
46175 Westlake Drive
Suite 350
Sterling, VA 20165-5870
Cell: 703.222.4466
Rick.Munch@Truist.com



David Black
Guaranteed Rate
Business: 703.382.1935
Fax: 872.808.1322
Cell: 703.282.0054
david.m.black@rate.com



John Yannetti
Mortgage Banking Specialist - Officer
NMLS ID: 461904
First National Bank Corp.
4114 Legato Road, Suite 450
Fairfax, VA 22033
Mobile: 703.623.4100
yannettij@fnb-corp.com



Marissa Terrebonne
Wells Fargo Home Mortgage
1751 Pinnacle Drive, 3rd Floor
McLean, VA 22102
Fax: 855.684.0662
Cell: 703.627.4772
Marissa.Terrebonne@wellsfargo.com
NMLSR ID 207996



Jennifer Grillo
Senior Loan Officer
4075 Wilson Boulevard, Suite 710,
Arlington, VA 22203
Cell: 703.395.3990
Fax: 703.653.3667
jegrillo@gmmlc.com

PREFERRED SETTLEMENT AGENCY



Centerview Title Group
Business: 571.318.5032
Fax: 571.921.9373
www.CVTitle.com

If you select, and are approved by and close using one of the above Preferred Lenders **AND** you select Evergreene Homes' Preferred Settlement Agency, you shall receive up to **\$8,000** at Settlement (the "Settlement Costs Credit") paid by a contribution from Evergreene Homes and/or the Preferred Lender toward the "Approved Settlement Costs." Approved Settlement Costs means: Any Settlement Costs defined in the Agreement of Sale that, for the loan program selected by you, the Preferred Lender allows you to receive a credit for from Lender and/or Evergreene Homes. Approved Settlement Costs shall not include any prepaid items, such as mortgage insurance premiums, real estate taxes, hazard insurance premiums or interest. Lenders and certain loan programs (e.g. FHA, VA etc.) may not allow certain specified Settlement Costs to be paid by you nor allow you to receive a credit for such items from Evergreene Homes and Lenders. Any such disallowed items do not constitute Approved Settlement Costs.

The **maximum** Approved Settlement Costs Credit that you shall receive is **\$8,000**. In the event that at the time of Settlement, the actual Approved Settlement Costs are less than the maximum, you shall receive only the actual costs incurred.