

COMMUNITY SITE PLAN



| LOTS | PREMIUM |
|---------|------------|
| 1 - 9 | NO PREMIUM |
| 10 - 14 | \$10,000 |
| 15 - 27 | \$15,000 |
| 28 - 33 | \$20,000 |
| 34 - 38 | \$30,000 |
| 39 - 42 | \$300,000 |

CHECK OUT
ATLANTIC EAST'S
STUNNING
PRIVATE POOL
AND CLUBHOUSE,
FEATURING A
SECOND LEVEL
DECK AND BAR
THAT LOOKS OVER
THE BAY!



COMMUNITY PRICE SHEET



TURNSTONE 1,830 SF
STARTING AT \$699,900



DEWEY II 2,652 SF
STARTING AT \$749,900



CAMPBELL 2,730 SF
STARTING AT \$769,900



BAYBERRY 2,850 SF
STARTING AT \$779,900



SANDPIPER 2,898 SF
STARTING AT \$782,900



OCEAN PINES 3,239 SF
STARTING AT \$822,900



COMMUNITY PRICE SHEET



BROOKLYN
30' X 58.10'
2,587 SF- 5 BDS/4.5 BATHS
FROM \$744,900



PLOVER
40' X 57'
2,234 SF- 4 BDS/3 BATHS
FROM \$743,900



BEECHWOOD
49.8' X 62.8'
2,194 SF- 3 BDS/3 BATHS
FROM \$739,900



OAKWOOD
49.8' X 62.8'
2,866 SF- 4 BDS/3 BATHS
FROM \$807,100



SHEARWATER
50' X 58.8'
3,187 SF- 4 BDS/3 BATHS
FROM \$839,200

Pricing, financing, and offers are subject to change without notice. Certain restrictions may apply. Photos shown may be for representative purposes only. Above information is believed to be accurate but should not be relied on without verification. See Sales Representative for complete details. Brokers Warmly Welcomed. © 2018. The Evergreene Companies, L.L.C. expressly reserves its copyright, commonlaw property rights and all other intellectual property rights in these plans. These plans shall not be modified, changed or reproduced in any form or matter, nor shall they be assigned to any third party without the express written permission and consent of the Evergreene Companies, L.L.C.

Signature BY Evergreene



Atlantic East: 36176 Cordgrass Dr, Lewes, DE



5 bedrooms, 4.5 Bathrooms, 2,904 SF

Stunning Upgraded Features, Community Bay Views, Quick Delivery
(Elevator Included)

\$923,865

MyEvergreeneHome.com

| 1.855.54.BEACH

| Sales@EvergreeneHomes.com

05/07/24EH

MHBR NO. 6243



Pricing, financing, and offers are subject to change without notice. Certain restrictions may apply. Photos shown may be for representative purposes only. Above information is believed to be accurate but should not be relied on without verification. See Sales Representative for complete details. Brokers Warmly Welcomed. © 2023. The Evergreene Companies, L.L.C. expressly reserves its copyright, commonlaw property rights and all other intellectual property rights in these plans. These plans shall not be modified, changed or reproduced in any form or matter, nor shall they be assigned to any third party without the express written permission and consent of the Evergreene Companies, L.L.C.

EVERGREENE HOMES PROUDLY PRESENTS ATLANTIC EAST, WHERE LUXURY MEETS COASTAL LIVING.

Introducing Lot 10, a stunning Bayberry home with exceptional upgrades. This quick delivery property is situated in a prime location, allowing residents to enjoy all the exclusive community amenities. Experience luxury living at its finest in this meticulously designed and conveniently located home.

UPGRADED FEATURES:

Immerse yourself in this beautiful home in the serene coastal woodland atmosphere. Relax during off-seasons, surrounding the elegant fireplace and looking out onto the extended deck. This open concept floor plan has upgraded selections that have been meticulously crafted to ensure quality. The elevator adds a touch of luxury and efficiency to this exceptional property.

OUTDOOR OASIS:

Experience the epitome of outdoor-indoor living with the Bayberry floor plan. The extended deck is perfectly placed right off the living area to add dimension as well as the addition of natural light that flows into the home. Smell the salty air from all of the optional outdoor additions. Embrace the seamless transition between indoor comfort and outdoor serenity at lot 10.

QUALITY DELUXE KITCHEN:

Lot 10 offers an incredible deluxe kitchen with top-notch selections that will elevate your culinary experience. The abundance of cabinet space provides ample storage for all your kitchen essentials. The high-end quartz countertops serve as the centerpiece of the kitchen, perfect for hosting gatherings and preparing meals with ease. Strategically placed to allow you to partake in all the fun and conversations, this kitchen is designed for both functionality and socializing, ensuring a seamless and enjoyable cooking experience.

Contact us today to schedule a private tour of the Bayberry Floor Plan and experience the epitome of luxury living in Delaware. Your forever home awaits.



INCLUDED FEATURES

Structural

- Structurally Engineered Piling System
- Panelized 2x6 Wall Systems, 16" O.C.
- Engineered Floor & Roof Trusses
- PEX Plumbing System
- Zip Wall Sheathing System
- Concrete Driveway and Lead Walk Installation (Per Plan)

Distinctive Exteriors

- Authentic Coastal Architecture
- Low Maintenance Certaineed Vinyl Siding
- Garage Door w/ Window Panel
- ½ hp Belt Drive Garage Door Opener & 2 Remotes
- Limited Lifetime Architectural Shingles
- Landscaped Professionally with Shrubs & Sod
- Sod and Irrigation Included in Front, Sides, and Rear up to 25'
- Hose Bibs & GFI Outlets Front & Rear
- Composite and Duradek Low Maintenance Decking (Per Elevation)
- Flush Glazed Entrance Door
- 5" Gutters and Downspouts

E-Smart Tech Package

- ((5) Single Outlets of Your Choice of CAT6 or RG6
- Smart Z-Wave Hub
- (1) Z-Wave Deadbolt Lock
- Z-Wave Front Porch Light & Foyer Light
- Video Doorbell
- Structured Wiring Cabinet

Elegant Interior Features

- Prefinished Engineered Hardwood in Foyer and Kitchen (Per Plan)
- Designer & Recessed Lighting Package
- Carpeted Stairs with Oak Handrails
- Quality Carpet in Bedrooms (Per Plan)
- Three-Panel Craftsman Interior Doors
- Three-Toned Low VOC Paint
- Multi-Media & Technology Program
- Cabinet Hardware in Kitchen & Baths
- Shelving in Pantry, Linen Closet, Coat Closet, and Bedroom Closets (Per Plan)

For The Chef

- Deluxe 42" Cabinets
- Granite Countertop in Kitchen
- Undermount Stainless Steel Single Bowl Sink
- Designer Chrome Faucet
- Stainless Steel Appliances (Refrigerator, Range, Dishwasher, Microwave)
- Garbage Disposal

Deluxe Baths

- Full Height Cabinets in all Full Baths
- Hand-Set Ceramic Tile Floor
- Hand-Set Ceramic Tile Walls in Owner's Shower (Per Plan)
- Elongated Water Closets
- Designer Chrome Faucets
- Cultured Marble Rectangular Bowl Vanity Countertops in all Full Baths
- Pedestal Sink with Decorative Mirror in Powder Room

E-Greene Energy Efficiency

- High Performance Low "E" Vinyl Windows
- Exterior Walls- R21 Insulation
- Blown in Insulation in Ceiling- R38
- Open Cell Spray Insulation in Cold Floor Garage (Per Plan)
- WiFi Compatible Thermostat
- Up to 16 SEER High Performance Heat Pump
- 50 Gallon Water Heater with Tank Booster Valve
- Advanced Three Stage Energy Seal Program
- Duct Blast & Blower Door Test on Every Home

Features That Prove Our Commitment

- Comprehensive Customer Involvement Program
- Evergreene Homes Limited Transferable Extended Warranty, guaranteed & issued by the Professional Warranty Service Corporation
- 1- Year Material and Workmanship Warranty
- 2-Year Mechanical Warranty
- 10-Year Structural Warranty

Buyer Initial _____



COMMUNITY INFORMATION

Atlantic East Community Association Fees

\$335 per month

\$1,500 One-Time Capital Contribution

\$125 One-Time Admin Fee for HOA

Additional Fees Include Water/Sewer Impact, Transfer Tax, and other Closing Costs

- Private Community Outdoor Pool, with Club House and Event Space
 - Clubhouse features a second level deck and bar area for stunning views of the bay and wetlands!
- Private Community Outdoor Fire Pit and Seating Area
 - Spend the cooler months cozied up with friends and neighbors around the community's outdoor stone fireplace.
- Community Wide Landscape Mowing Services
- Trash Removal
- Professional Property Management

Location:

- From Rt 1, head West on John J Williams Hwy/ Rt 24. Make a left onto Camp Arrow Head Road. Stay on Camp Arrow Head for 2.5 miles, and turn Left into Atlantic East community.
- Close to Rehoboth Beach, Tax Free Outlet Shopping, and the best of Delaware's local Dining and Entertainment!
- Beautiful Bay Views and Surrounded by Protected Wetlands and Forestry.
- Close to the award-winning Baywood Greens Golf Course.
- Close to the Freedom Boat Club for convenient and affordable boat access.
- Included in the Cape Henlopen School District.
- Low Property Taxes

*HOA fees for future phases are estimations and are subject to change without prior notice. For exact tax calculations please contact Sussex County (302) 855-7871. For estimated closing cost figures, request a sample loan scenario or closing cost list from preferred lender and settlement attorney.

AVAILABLE ELEVATIONS

THE TURNSTONE

AN EVERGREENE COASTAL SERIES HOME



ELEVATION A *(shown on cover)*



ELEVATION B



ELEVATION C



atlantic east

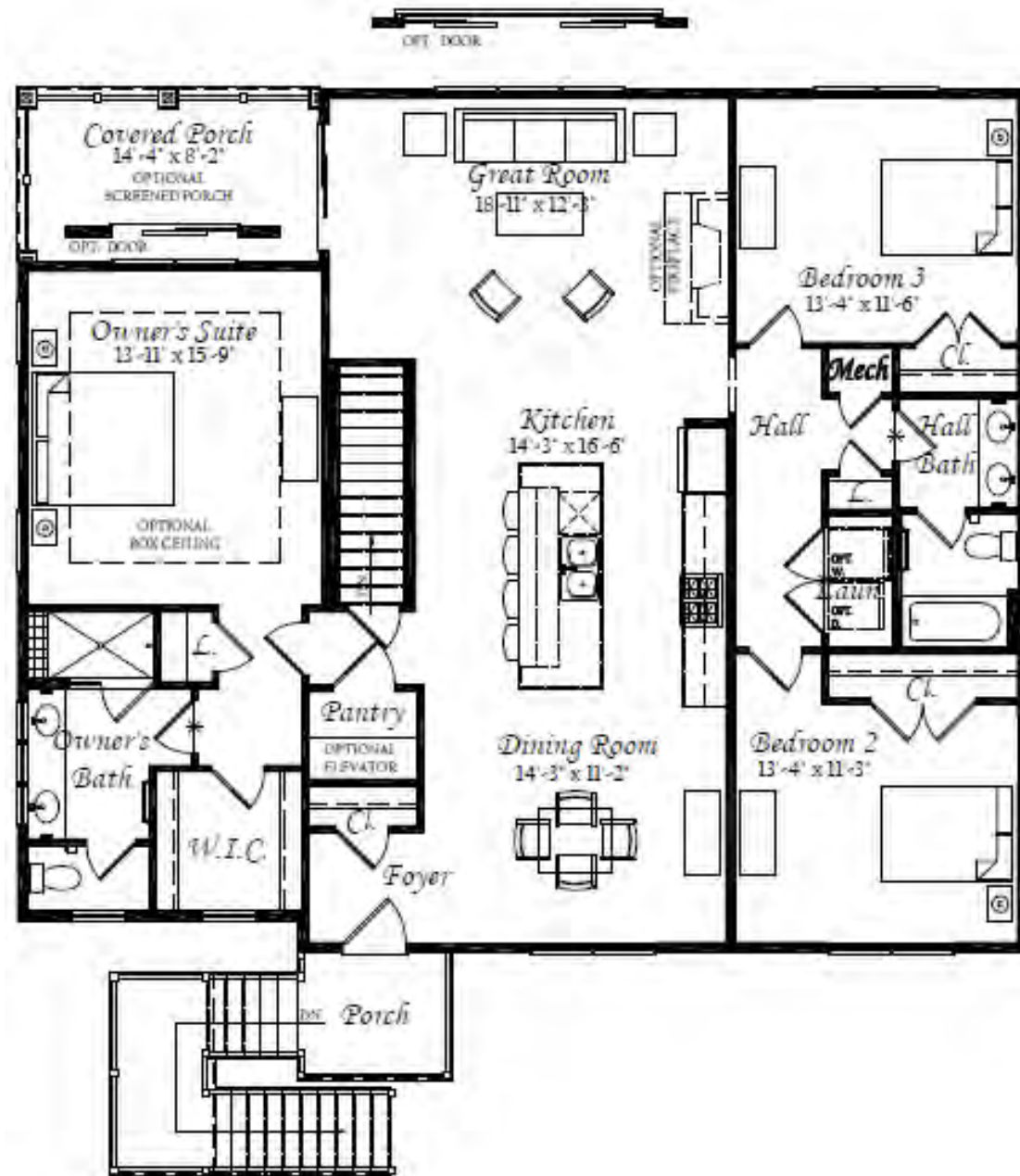
LEWES, DE



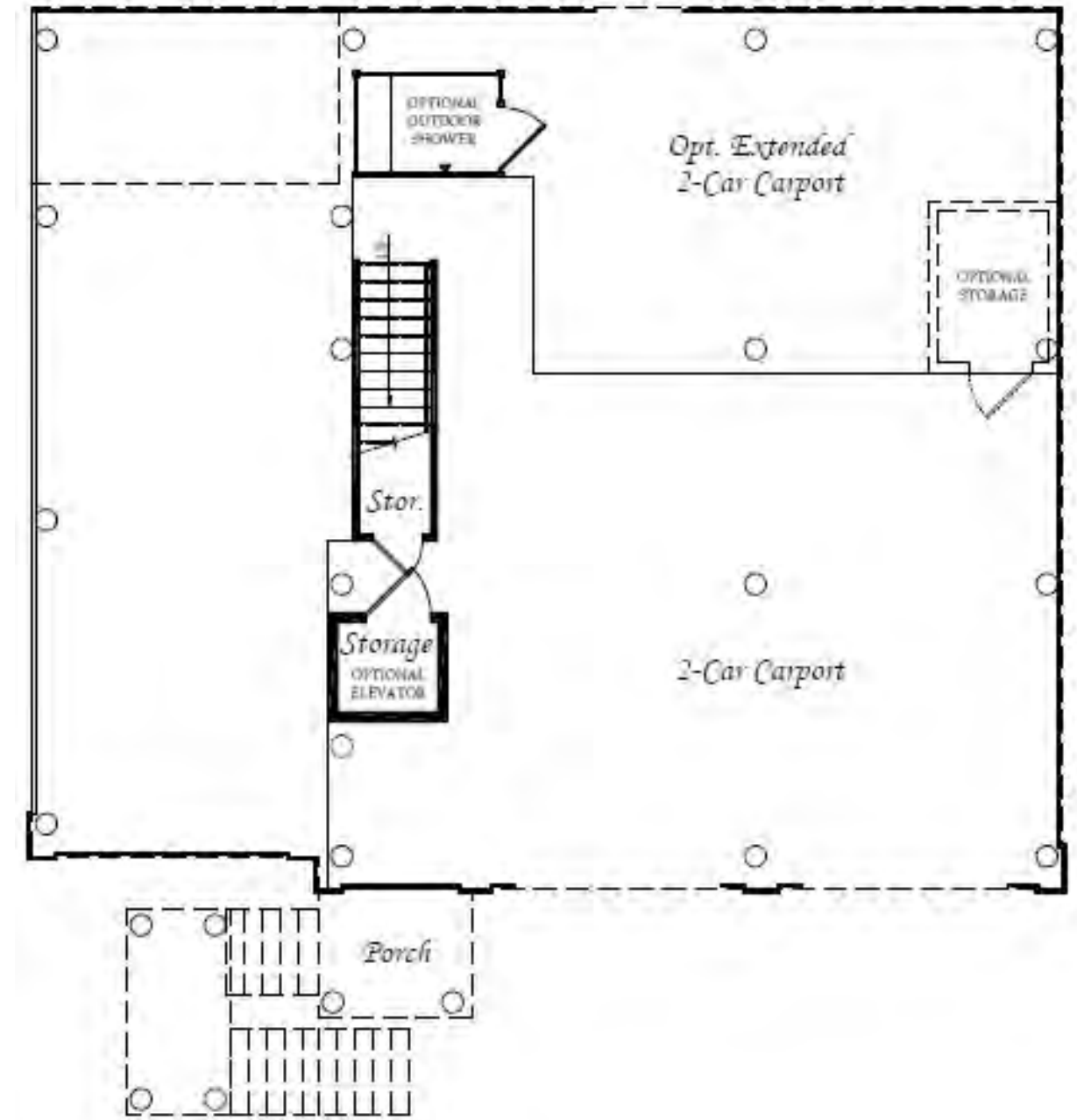
THE TURNSTONE FLOOR PLAN

THE TURNSTONE FLOOR

MAIN LEVEL



GROUND LEVEL



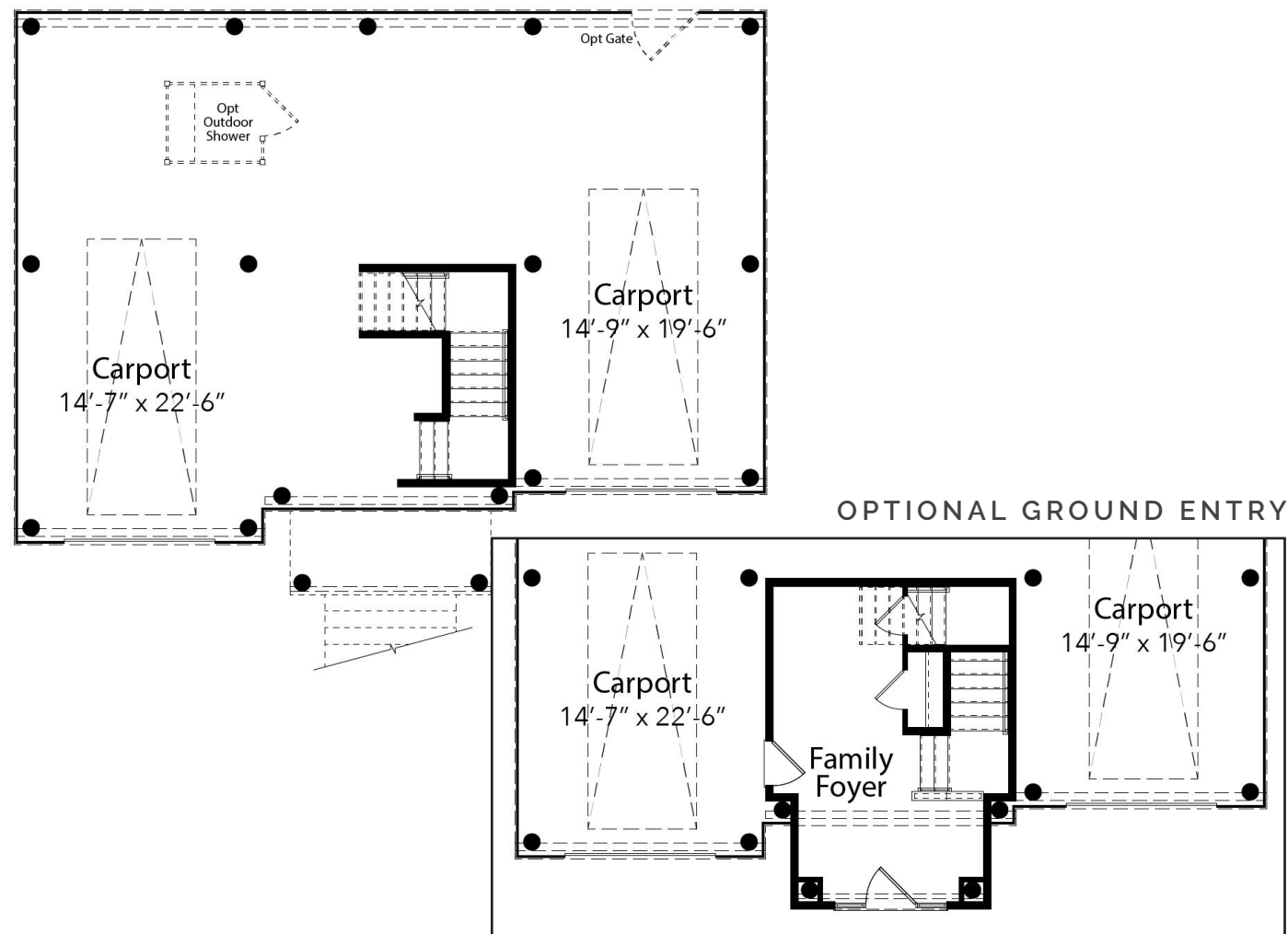


ELEVATION B



ELEVATION C

GROUND LEVEL



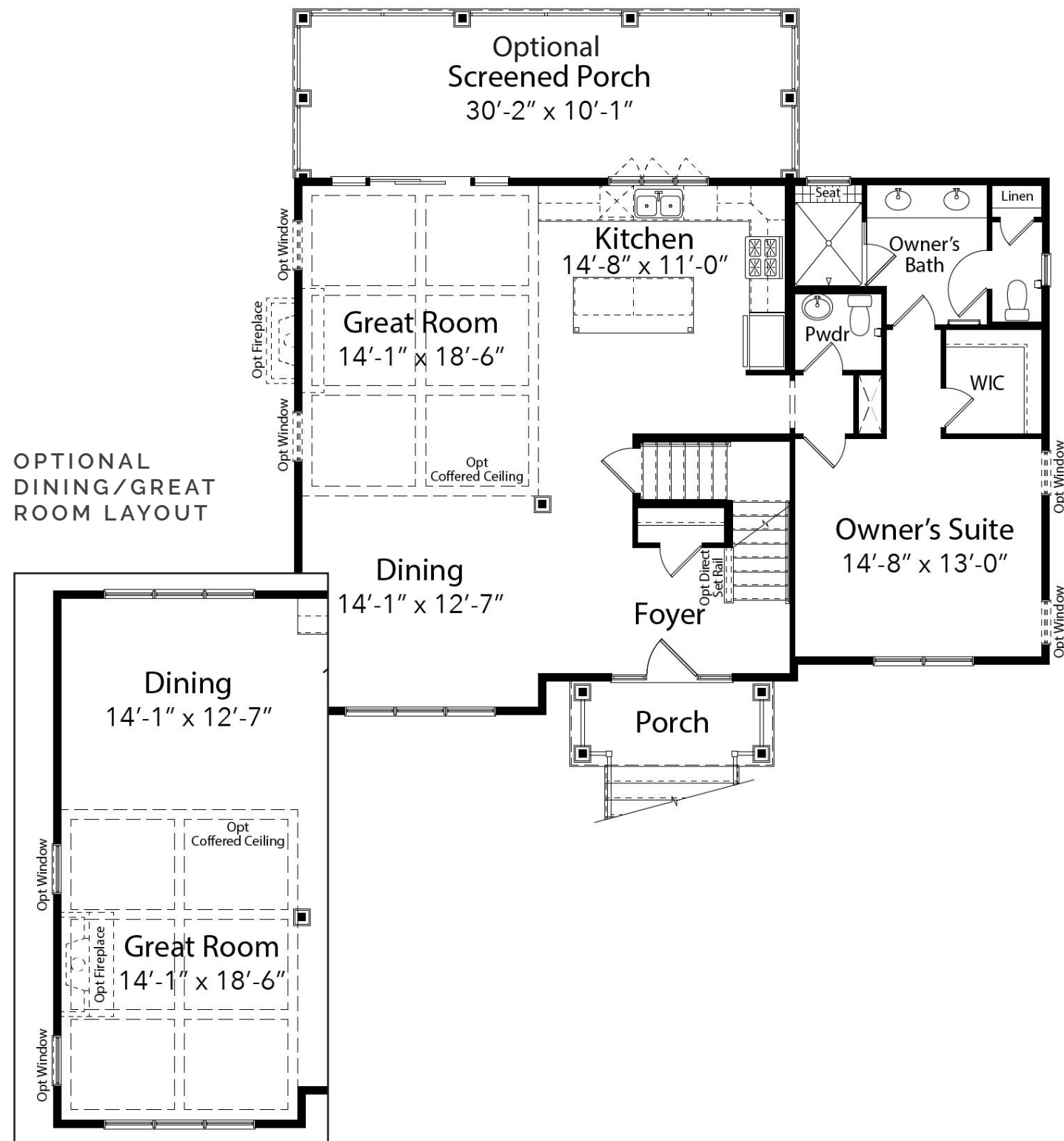
ELEVATION A

atlantic east

LEWES, DE

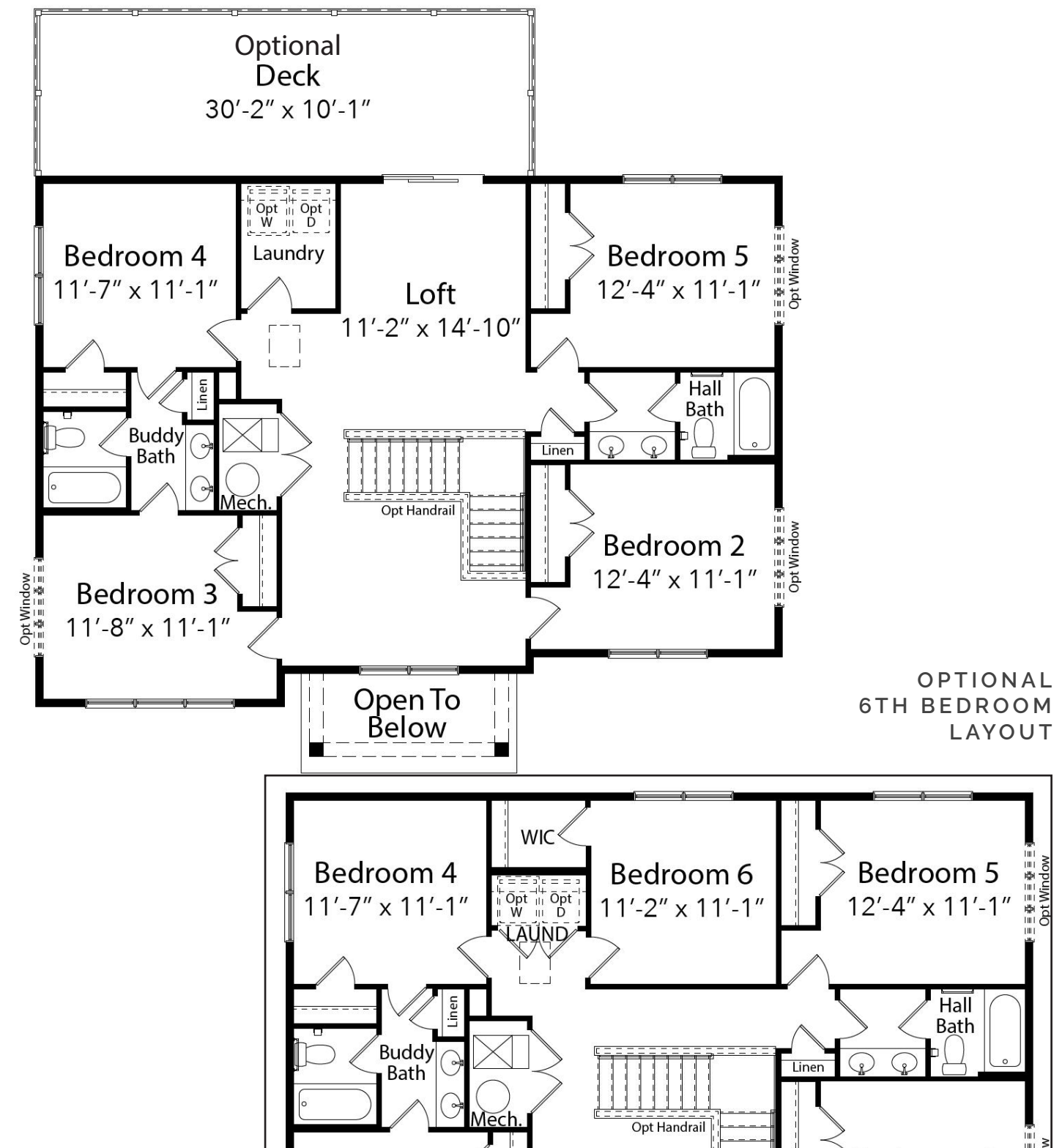
THE CAMPBELL FLOOR PLAN

MAIN LEVEL



THE CAMPBELL FLOOR PLAN

UPPER LEVEL



AVAILABLE ELEVATIONS

THE BAYBERRY

AN EVERGREENE COASTAL SERIES HOME



ELEVATION A *(shown on cover)*



ELEVATION B



ELEVATION C



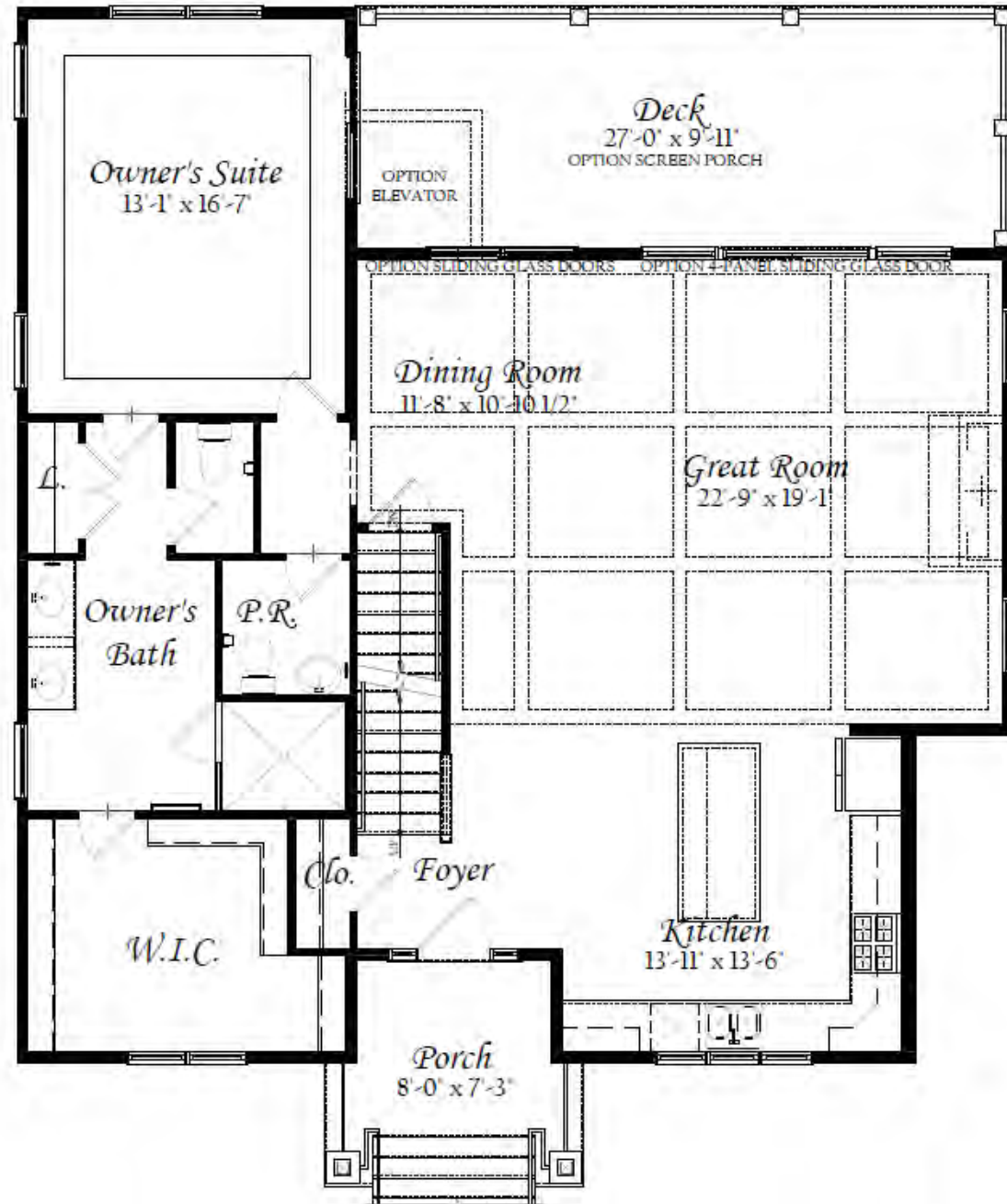
atlantic east

LEWES, DE

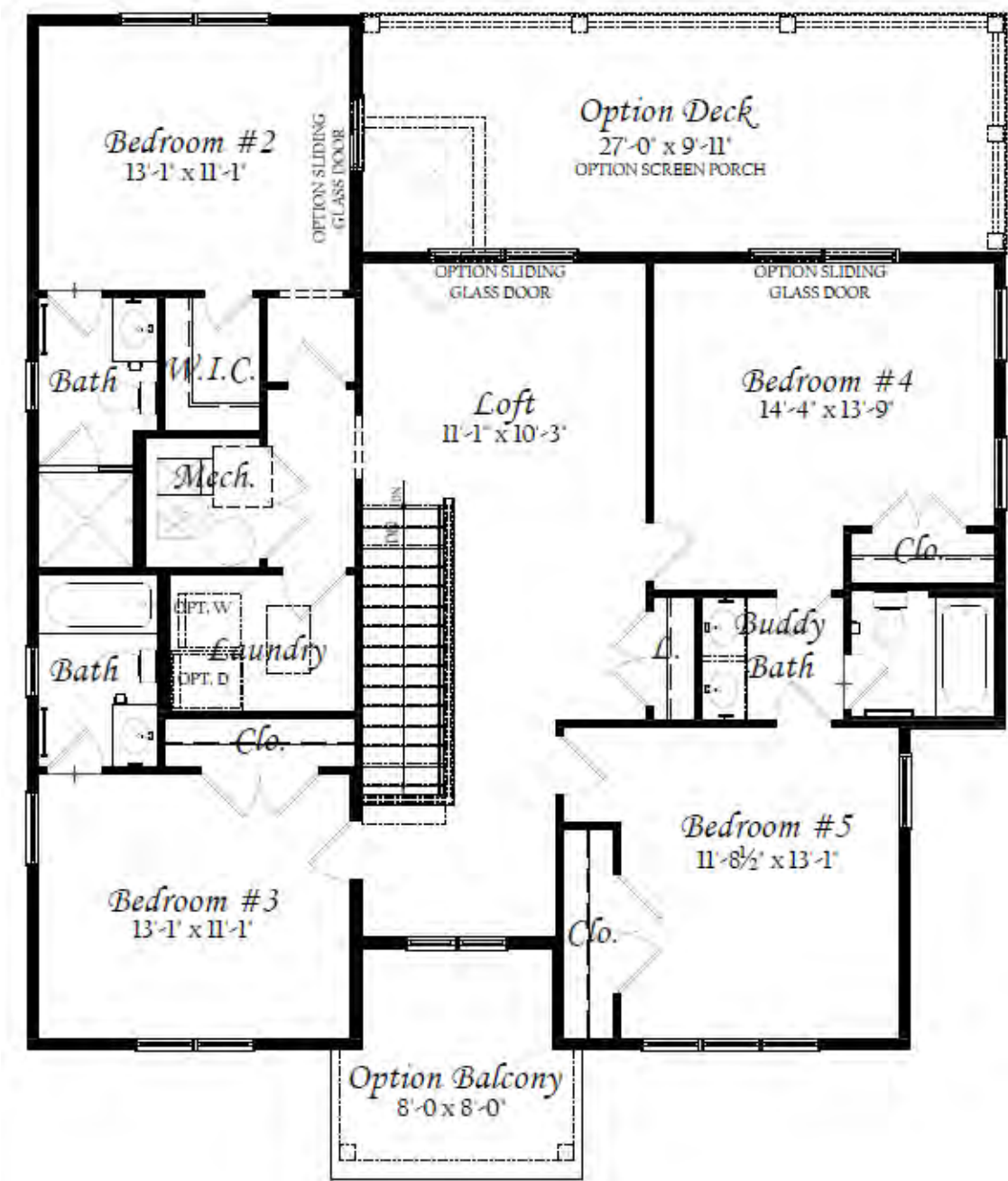
THE
BAYBERRY FLOOR PLAN

THE
BAYBERRY FLOOR PLAN

MAIN LEVEL



UPPER LEVEL



AVAILABLE ELEVATIONS

THE DEWEY II



ELEVATION B



ELEVATION C



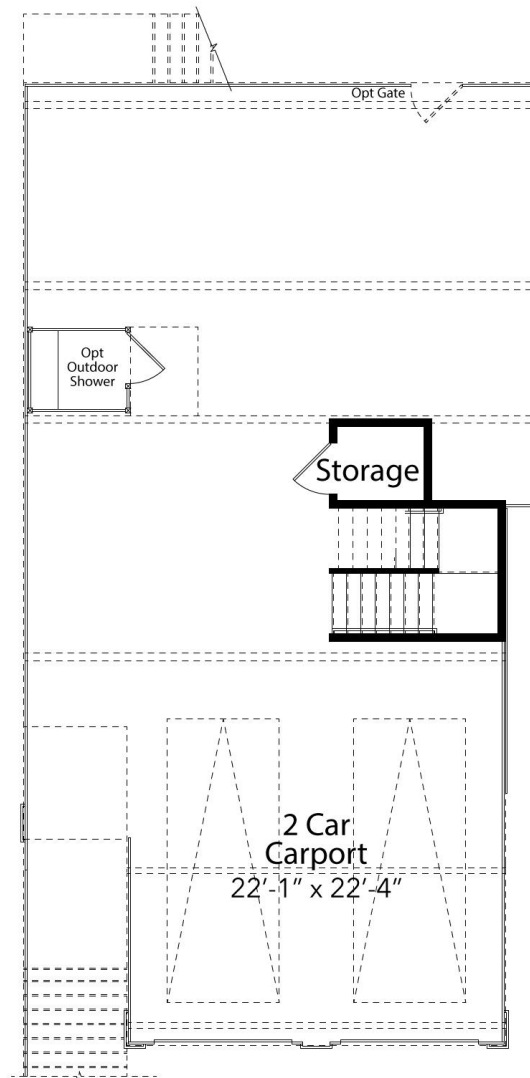
ELEVATION C

AN EVERGREENE COASTAL SERIES HOME

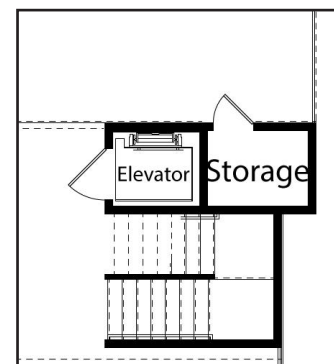


ELEVATION A

STANDARD GROUND LEVEL



OPTIONAL ELEVATOR



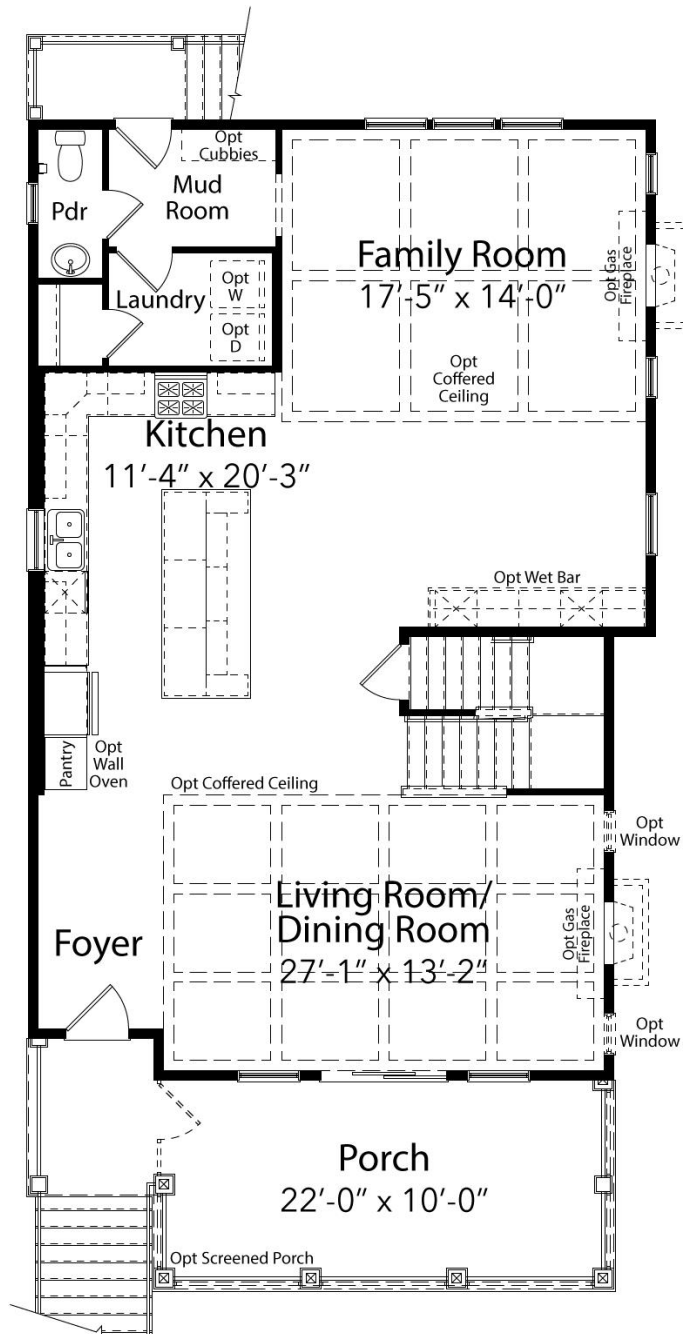
atlantic east

LEWES, DE

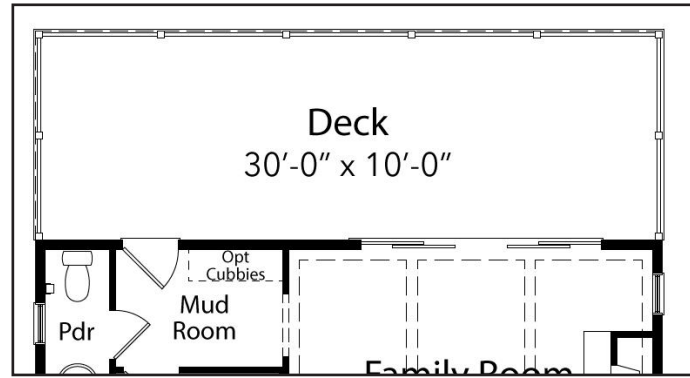


THE DEWEY II FLOOR PLAN

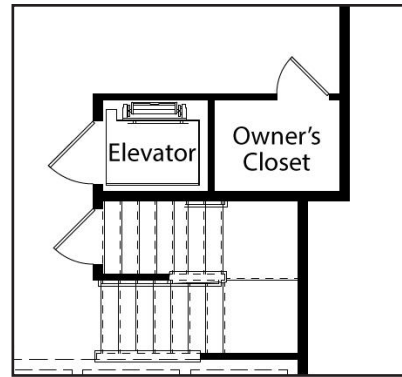
STANDARD MAIN LEVEL



OPTIONAL REAR DECK

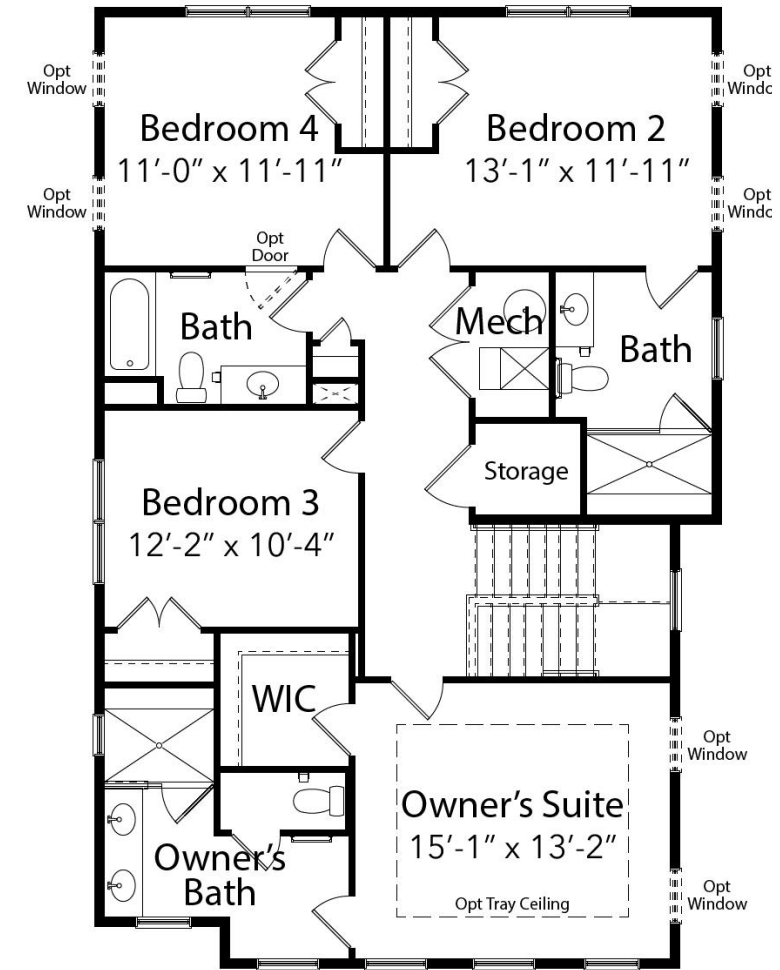


OPTIONAL ELEVATOR

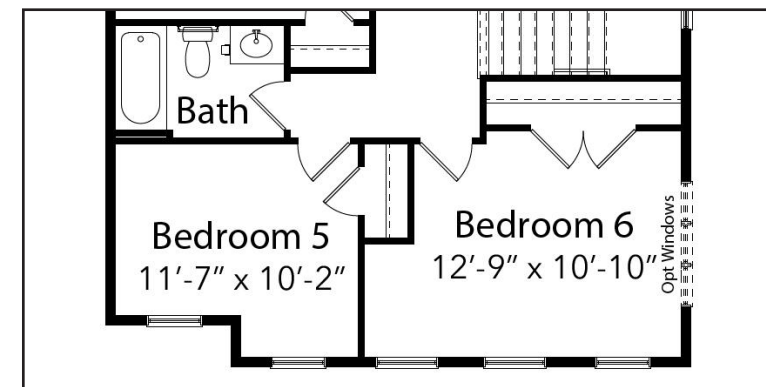
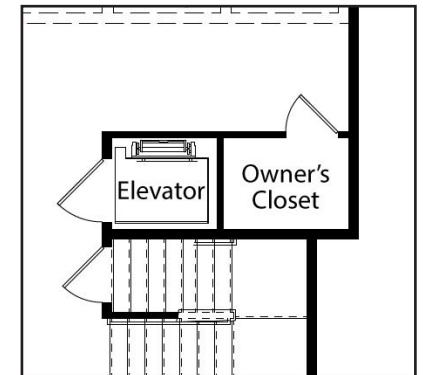


THE DEWEY II FLOOR PLAN

STANDARD UPPER LEVEL



OPTIONAL ELEVATOR



OPTIONAL 5 BEDROOM LAYOUT

(NOTE: "BEDROOM 6" IS A ROOM LOCATION IN LIEU OF AN OWNER BEDROOM - NOT A 6TH BEDROOM)

AVAILABLE ELEVATIONS

THE SANDPIPER

AN EVERGREENE COASTAL SERIES HOME



ELEVATION B *SHUTTERS OPTIONAL*

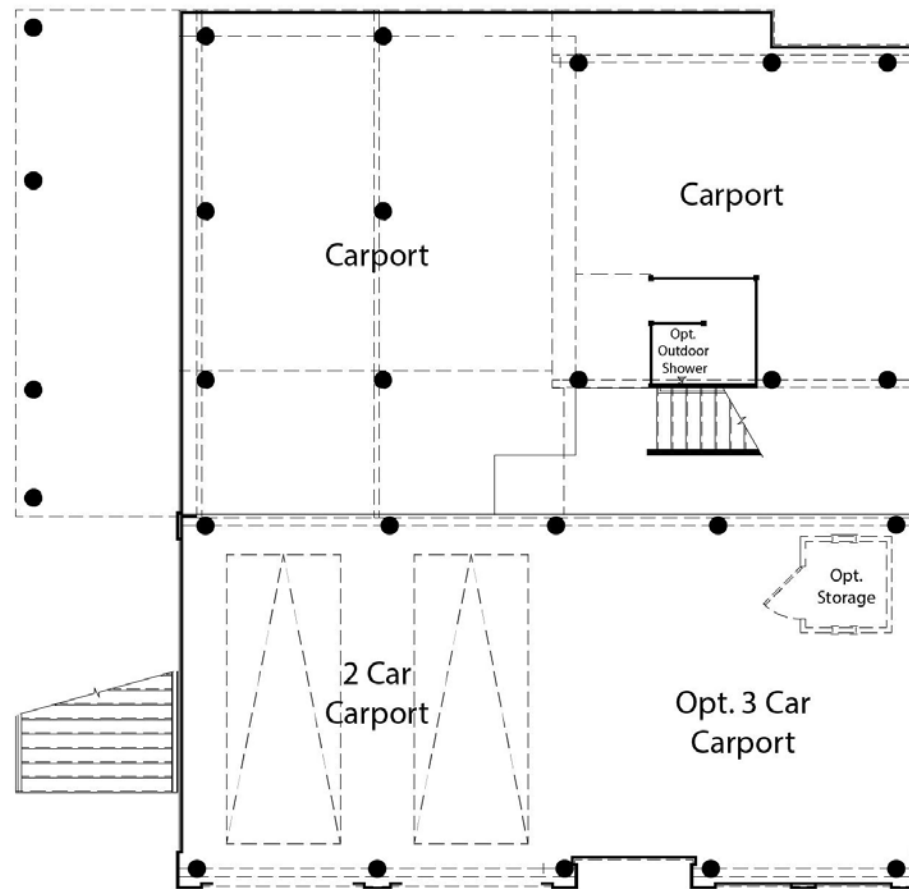


ELEVATION C *SHUTTERS OPTIONAL*



ELEVATION A *SHUTTERS OPTIONAL*

GROUND LEVEL



atlantic east

LEWES, DE

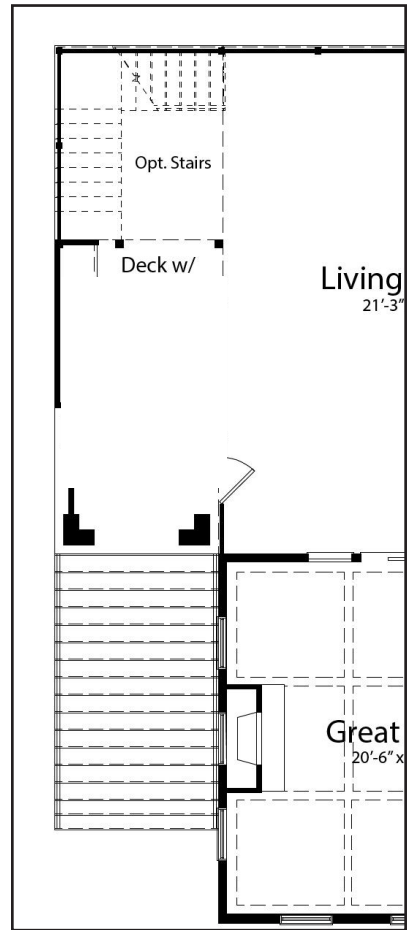
THE SANDPIPER FLOOR PLAN

THE SANDPIPER FLOOR PLAN

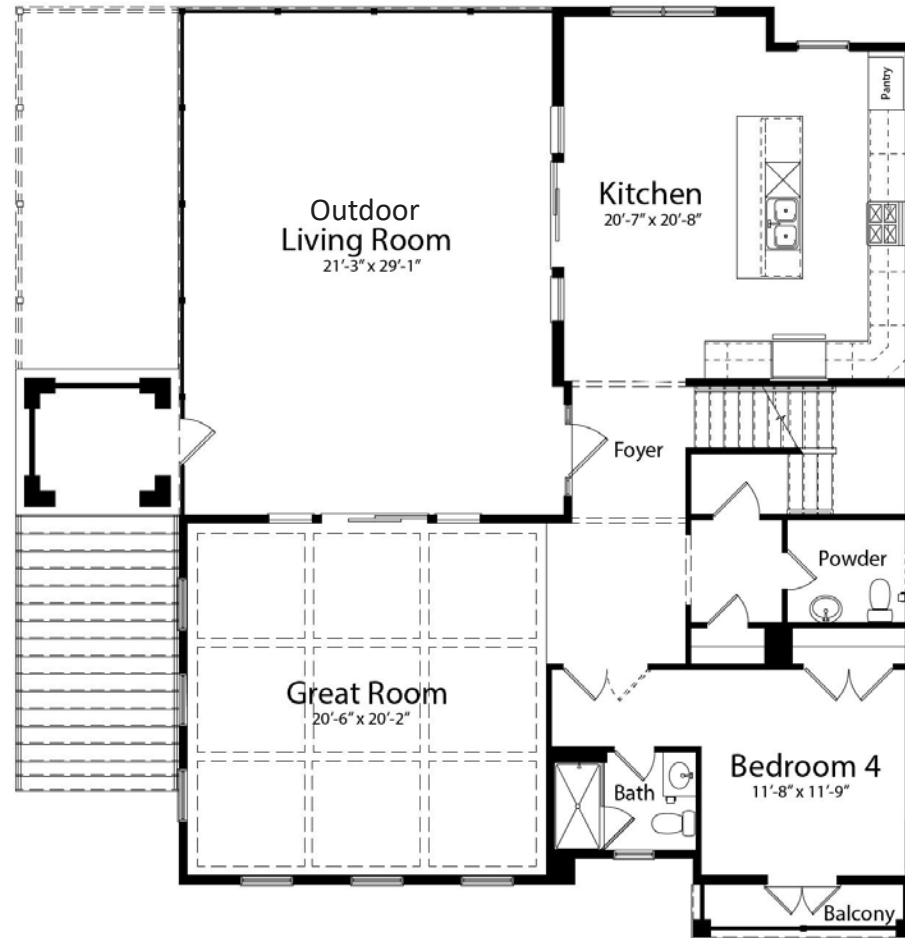
MAIN LEVEL

UPPER LEVEL

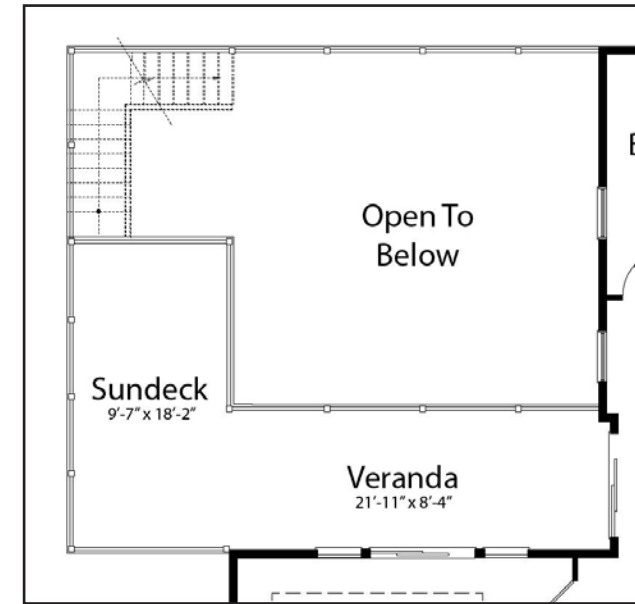
OPTIONAL EXTENDED DECK AND OPTIONAL STAIRS TO SUNDECK ABOVE



OPTIONAL FIREPLACE

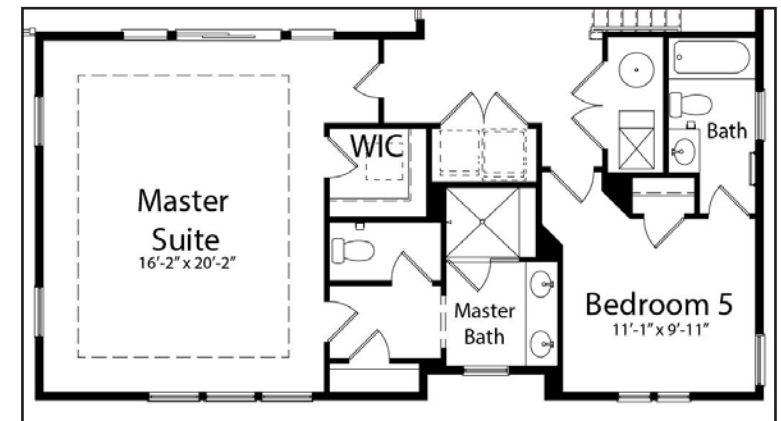
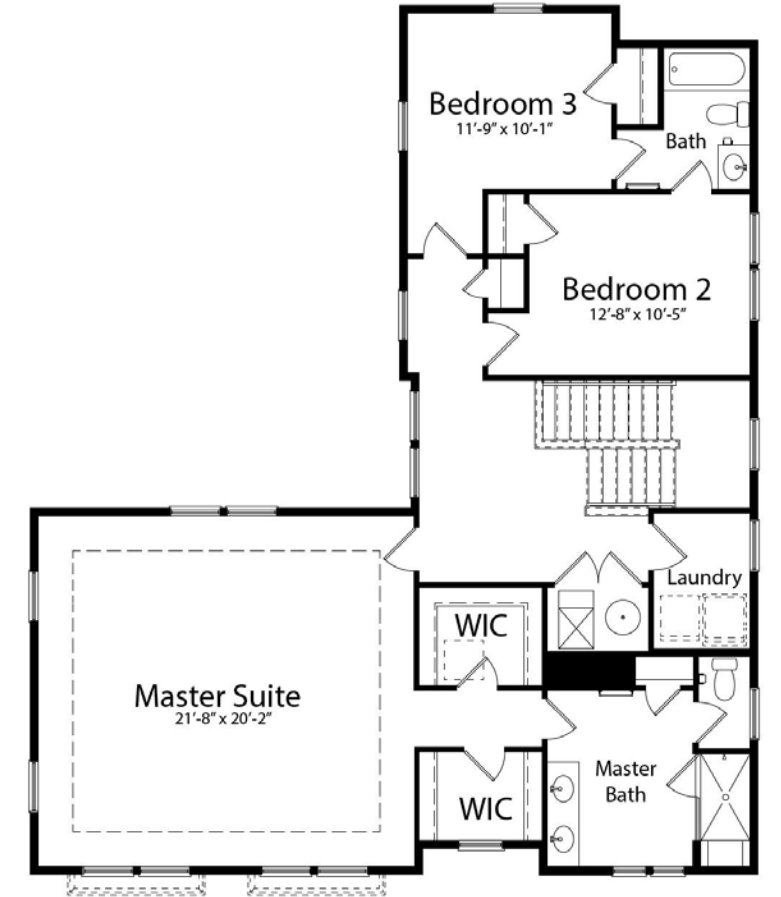


OPTIONAL ELEVATOR



OPT. VERANDA AND OPT. SUNDECK WITH OPT. STAIRS

OPTIONAL 5TH BEDROOM



AVAILABLE ELEVATIONS

THE OCEAN PINES

AN EVERGREENE COASTAL SERIES HOME



ELEVATION A *(shown on cover)*



ELEVATION B



ELEVATION C

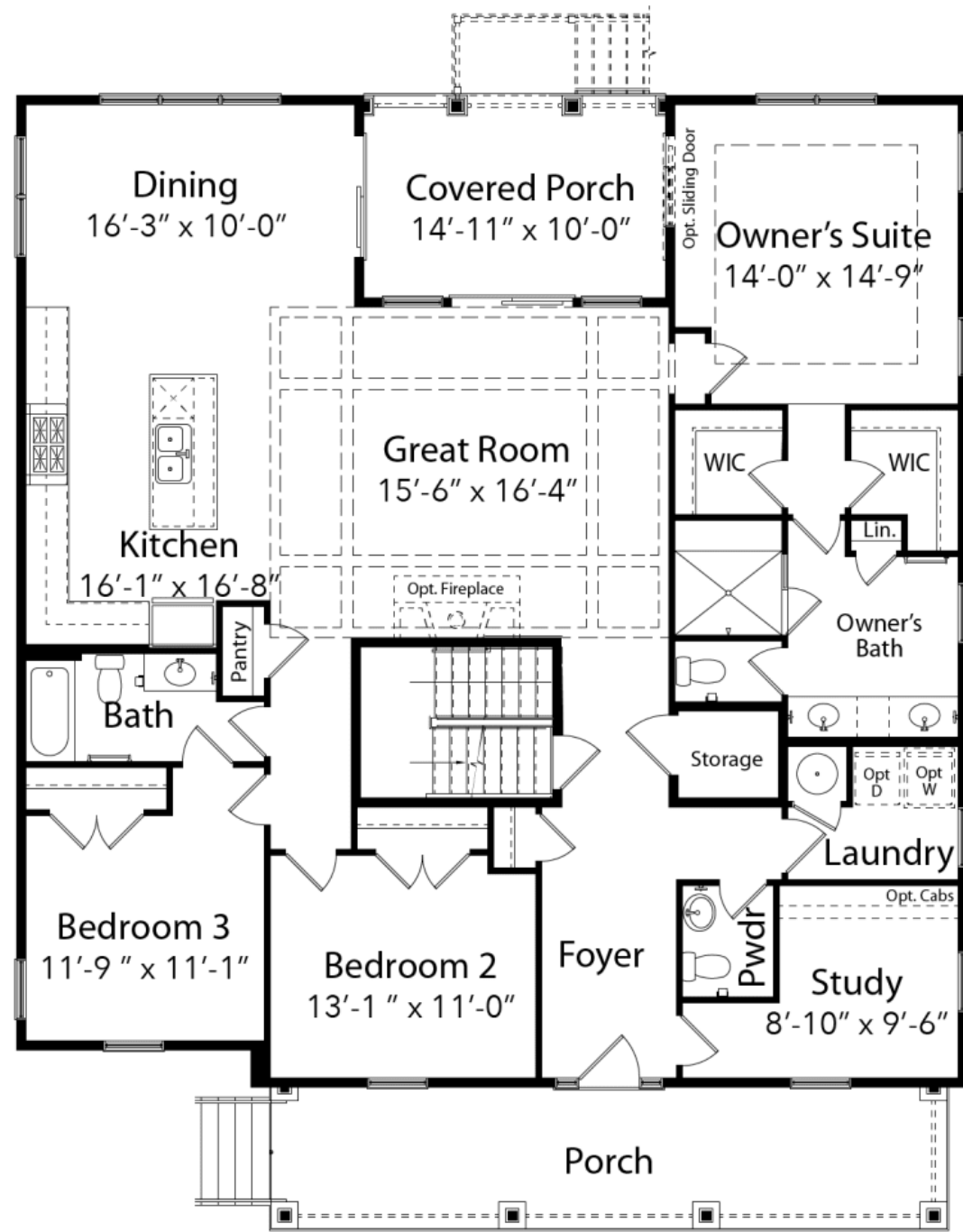


atlantic east

LEWES, DE

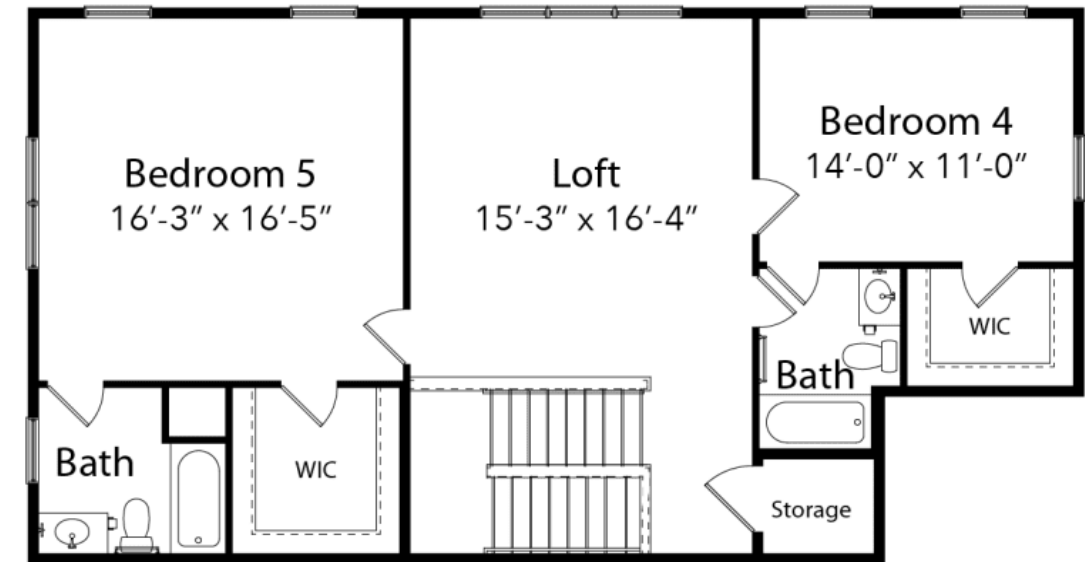
THE
OCEAN PINES FLOOR PLAN

MAIN LEVEL



THE
OCEAN PINES FLOOR PLAN

UPPER LEVEL



AVAILABLE ELEVATIONS

THE BROOKLYN

AN EVERGREENE VILLAGE SERIES HOME



ELEVATION A (SHOWN ON COVER)



ELEVATION A ALTERNATIVE



ELEVATION B



ELEVATION C



ELEVATION A

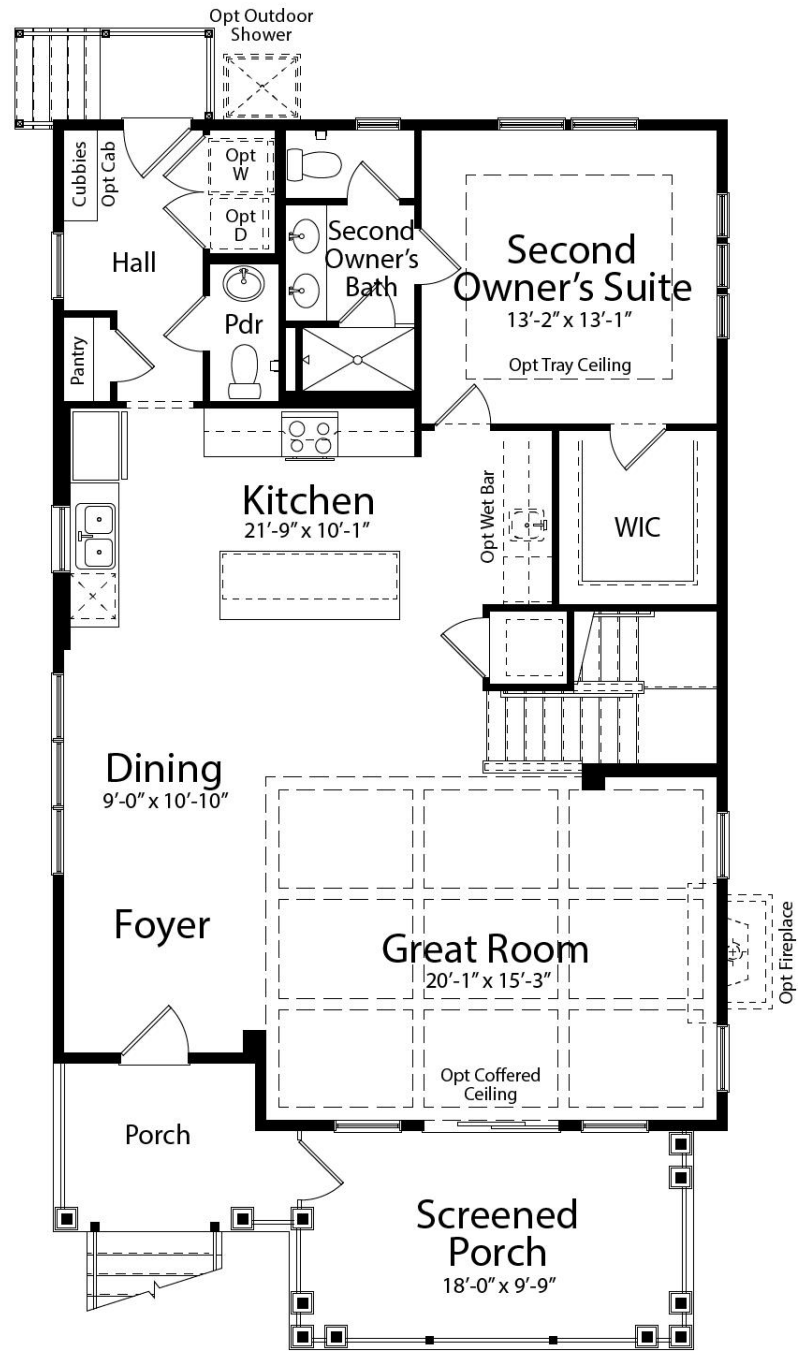
atlantic east

LEWES, DE



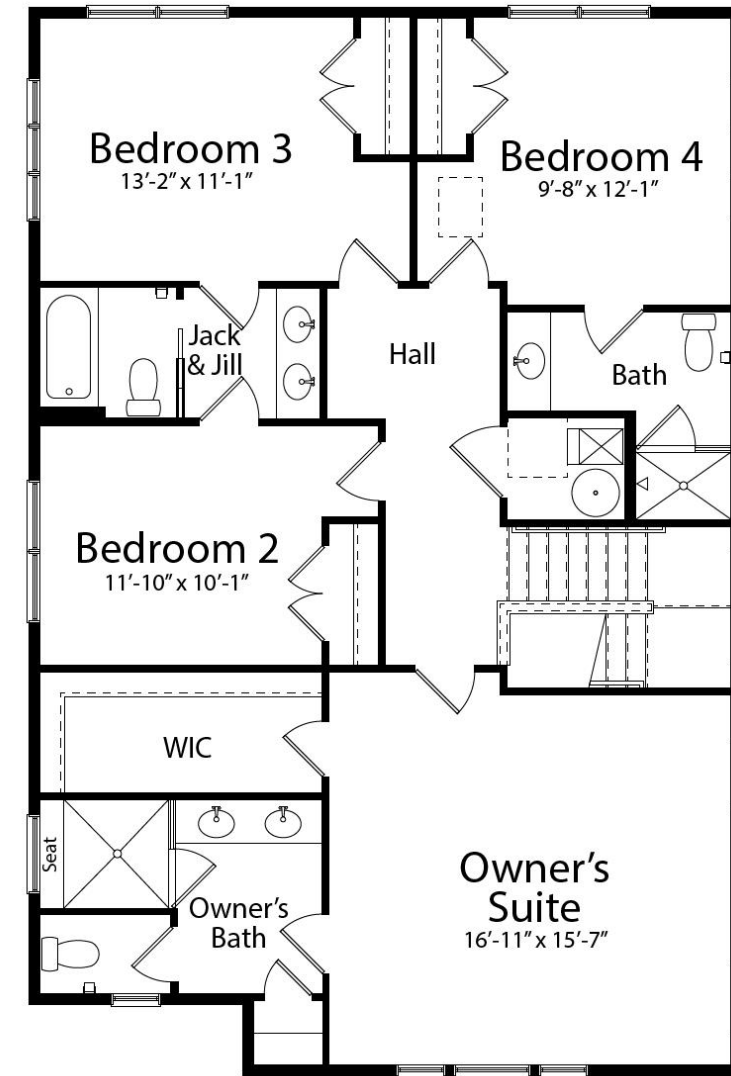
THE
BROOKLYN FLOOR PLAN

STANDARD MAIN LEVEL



THE
BROOKLYN FLOOR PLAN

STANDARD UPPER LEVEL



AVAILABLE ELEVATIONS

THE PLOVER



ELEVATION A (SHOWN ON COVER)



ELEVATION B



ELEVATION C

AN EVERGREENE VILLAGE SERIES HOME



ELEVATION A

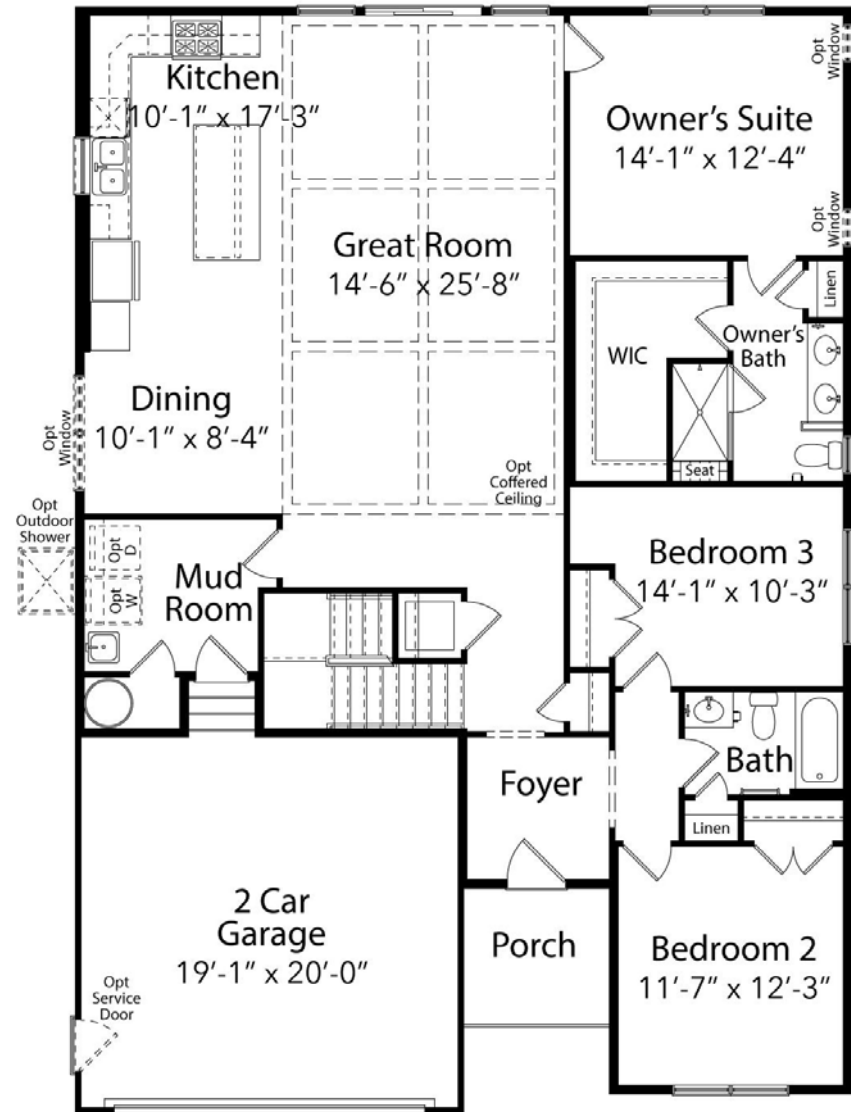
atlantic east

LEWES, DE



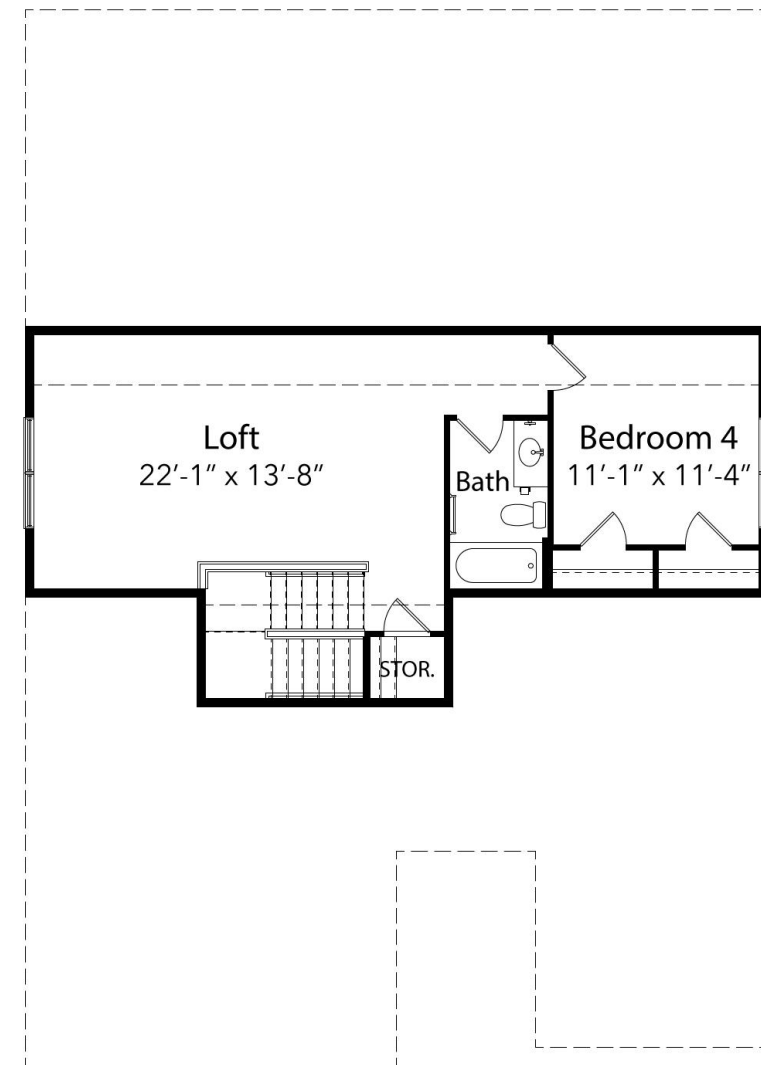
THE
PLOVER FLOOR PLAN

STANDARD MAIN LEVEL



THE
PLOVER FLOOR PLAN

STANDARD UPPER LEVEL



AVAILABLE ELEVATIONS

THE BEECHWOOD



ELEVATION A (SHOWN ON COVER)



ELEVATION B



ELEVATION C

AN EVERGREENE COTTAGE SERIES HOME



ELEVATION A

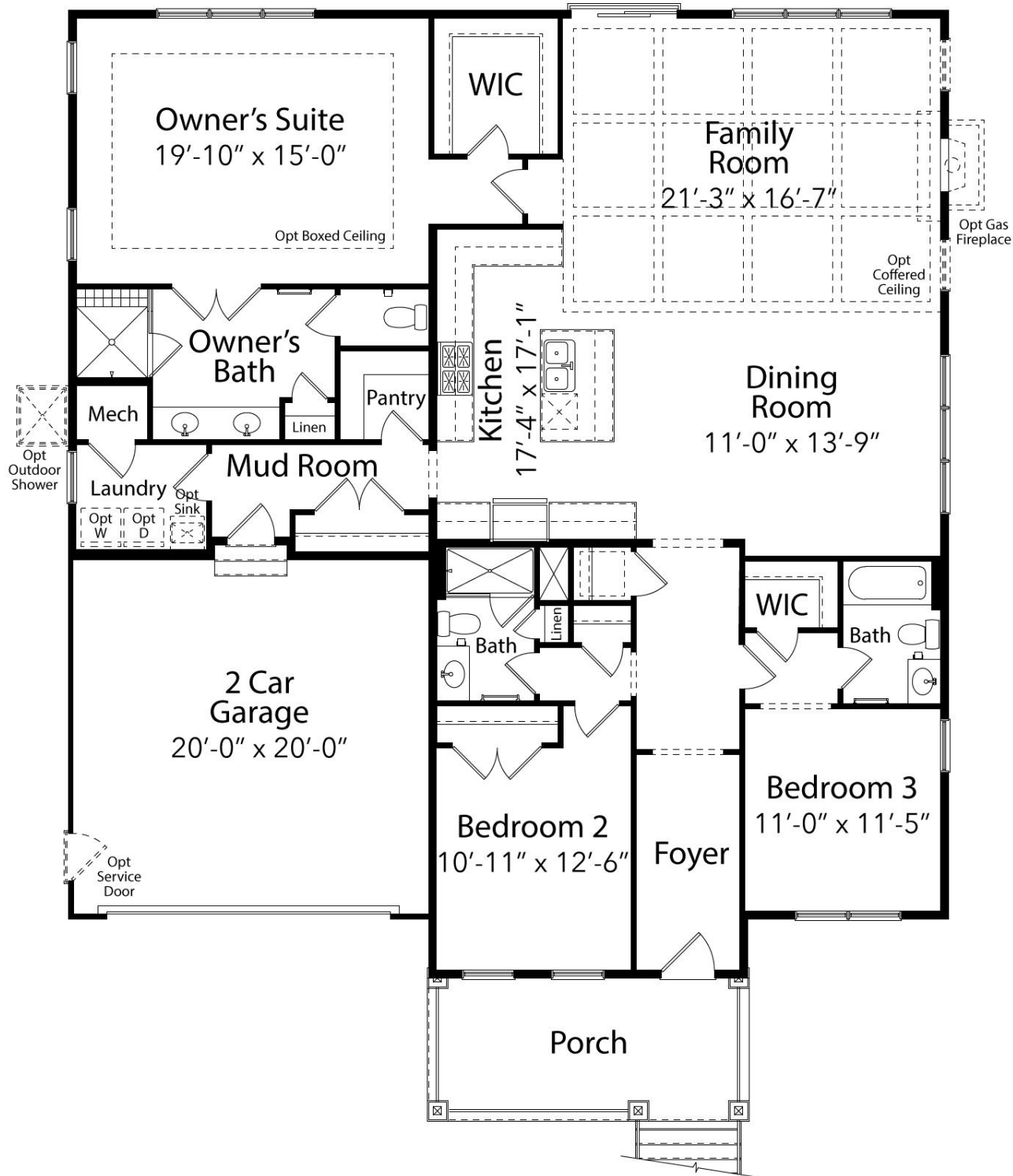
atlantic east

LEWES, DE



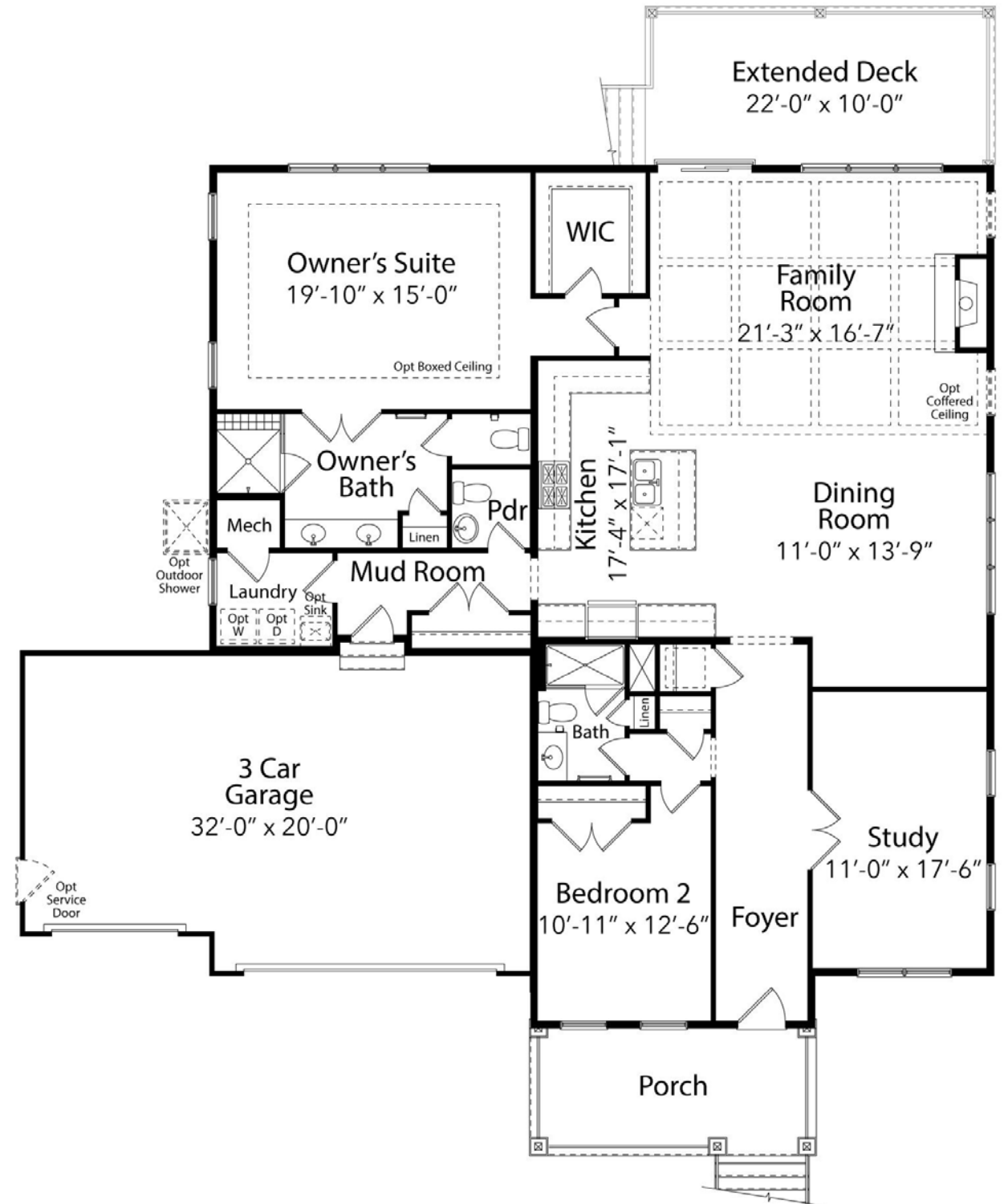
THE BEECHWOOD FLOOR

STANDARD MAIN LEVEL



THE BEECHWOOD FLOOR

MAIN LEVEL OPTIONS



AVAILABLE ELEVATIONS

THE OAKWOOD

AN EVERGREENE COTTAGE SERIES HOME



ELEVATION A *(shown on cover)*



ELEVATION B



ELEVATION C



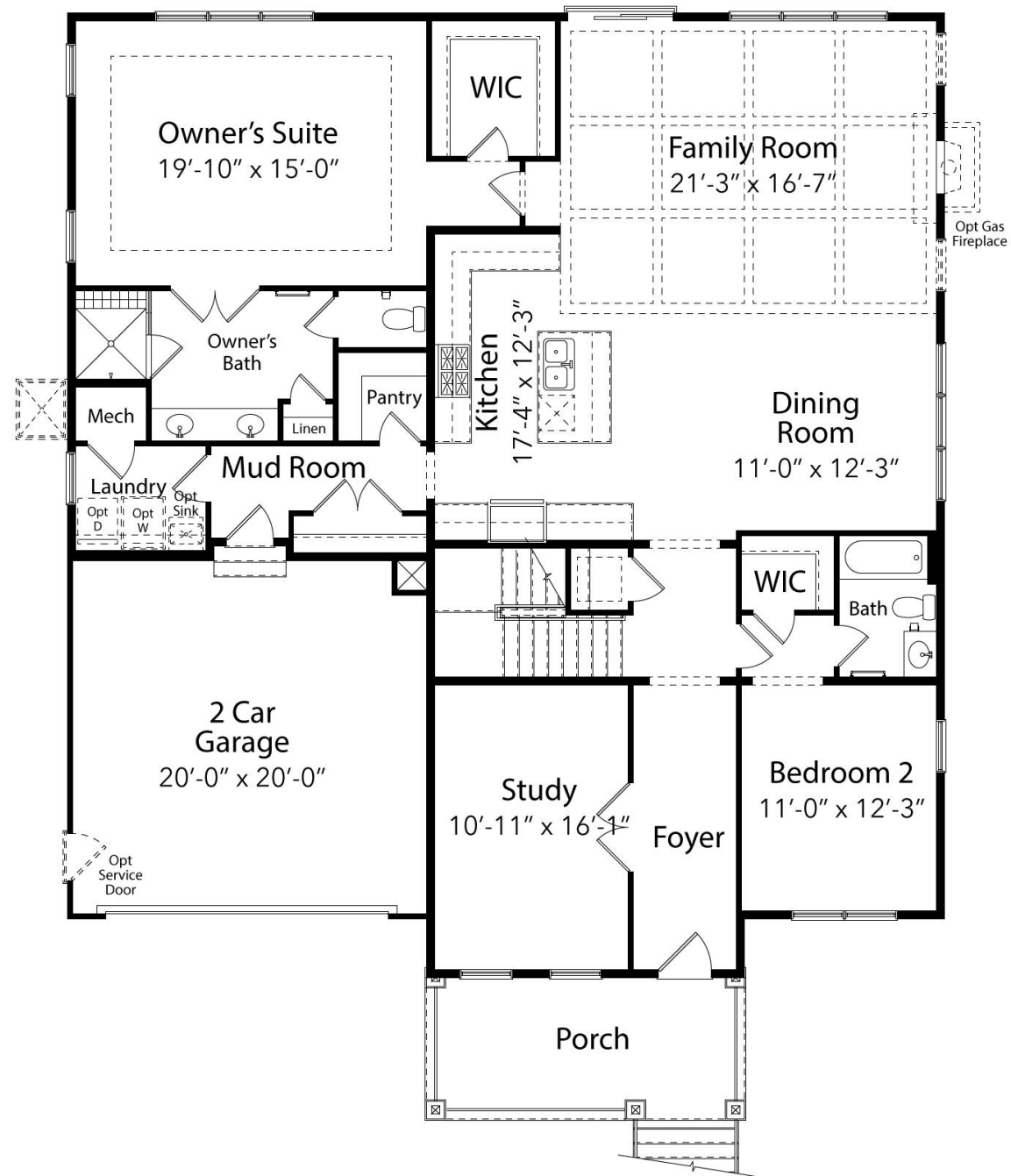
atlantic east

LEWES, DE



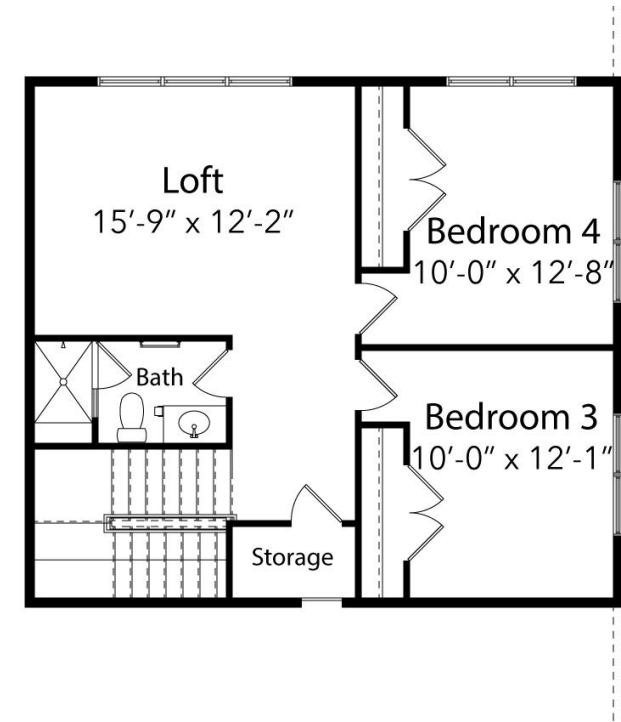
THE OAKWOOD FLOOR PLAN

MAIN LEVEL

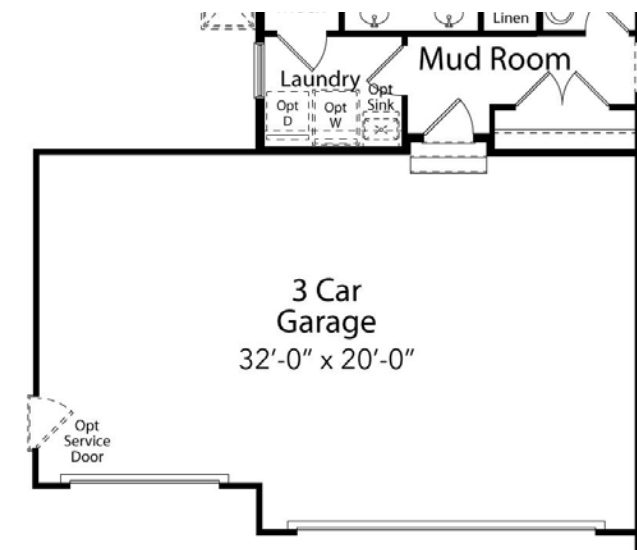


THE OAKWOOD FLOOR PLAN

UPPER LEVEL



OPTIONAL 3-CAR GARAGE



AVAILABLE ELEVATIONS

THE SHEARWATER

AN EVERGREENE COTTAGE SERIES HOME



ELEVATION A
(shown on cover)

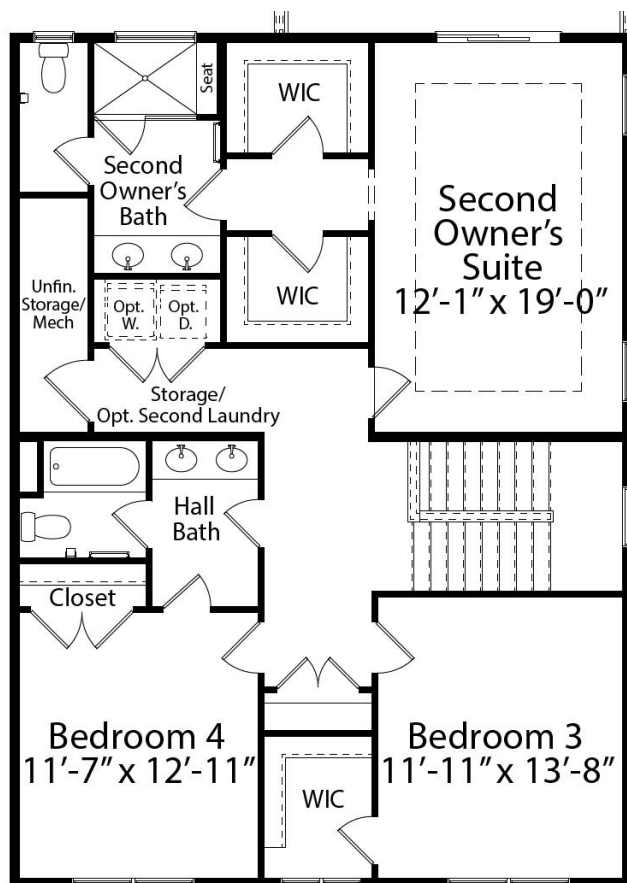


ELEVATION B

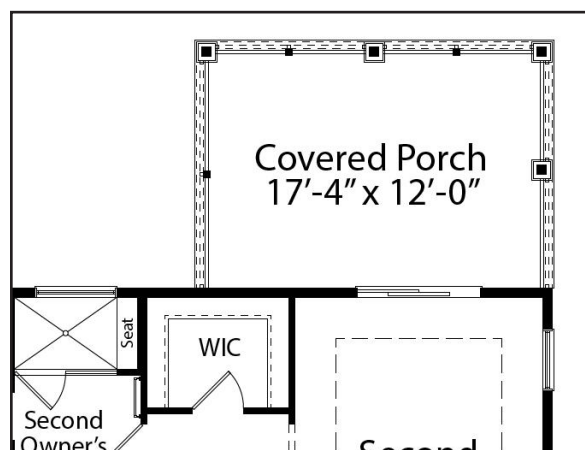


ELEVATION C

UPPER LEVEL OPT 2ND OWNER'S SUITE



OPTIONAL UPPER LEVEL COVERED PORCH



atlantic east

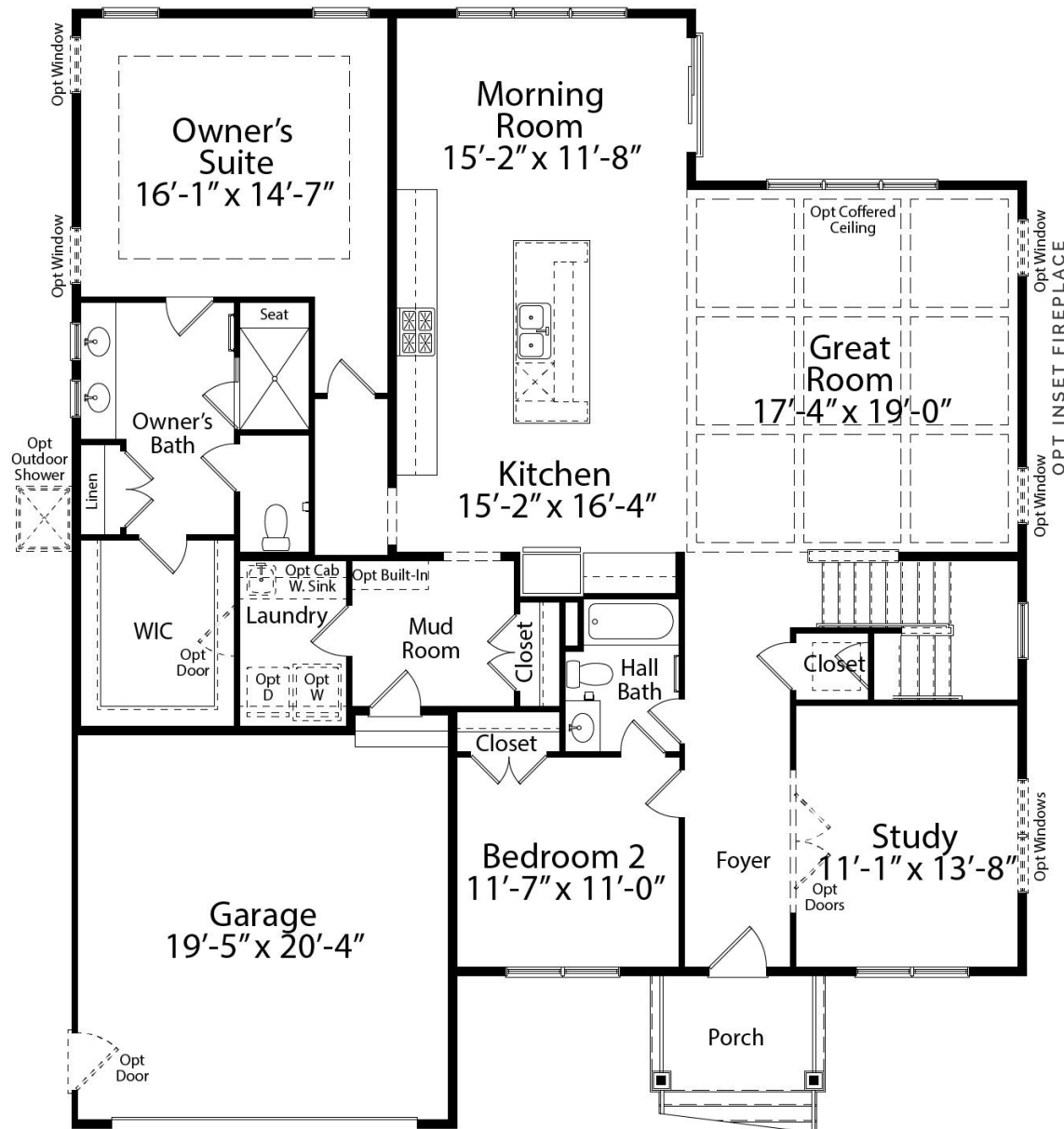
LEWES, DE



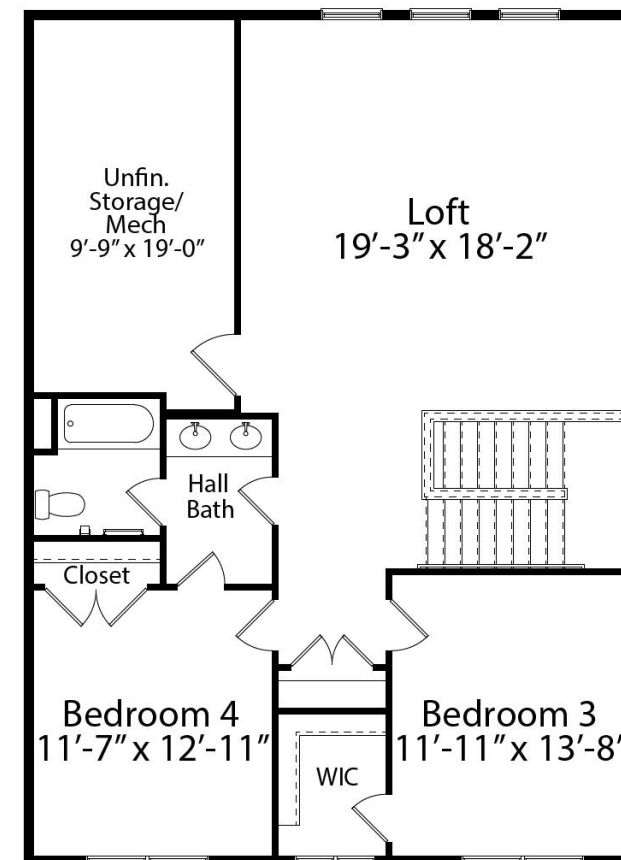
THE SHEARWATER FLOOR PLAN

THE SHEARWATER FLOOR PLAN

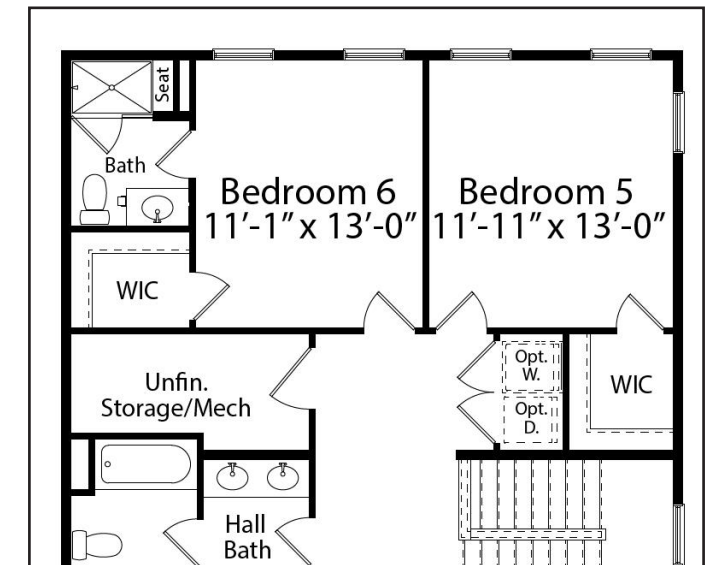
MAIN LEVEL



STANDARD UPPER LEVEL



OPTIONAL UPPER LEVEL WITH BEDS 5 & 6



PREFERRED LENDERS & SETTLEMENT AGENCY

If you're buying a home, and you need a loan, then choosing the right mortgage lender can be challenging. Let Evergreene help! We've done the research and selected preferred lenders for each of our communities that offer competitive rates and unparalleled customer service, ensuring an enjoyable purchase experience for you, our buyers.



SAVE MORE MONEY!

Ask your sales manager about the **special incentive** you'll receive when you close with our preferred lender and settlement agency!

PREFERRED LENDERS

SETTLEMENT AGENCY



Tatiana Camper
NMLS# 1538680
Truist Bank
Cell: 302-249-9869
Tatiana.Camper@Truist.com



Marissa Terrebonne
NMLSR # 207996
Wells Fargo Home Mortgage
Fax: 855-684-0662
Cell: 703-627-4772
Marissa.Terrebonne@wellsfargo.com



Candice Kinsler
Scott & Shuman, PA
33292 Coastal Highway, Suite 3
Bethany Beach, DE 19930
cwindsor@scottshumanlaw.com
Phone: 302.537.1147
Fax: 302.537.1174



Fernando Marquez
NMLS # 377910
McLean Mortgage
Fax: 571.419.6611
Cell: 703.627.3733
FMarquez@mcleanmortgage.com



Dan Murtaugh
NMLS # 40813
First National Bank
Fax: 843.306.8789
Cell: 410-599-6097
MurtaughD@fnb-corp.com

